

Thru Axle / hub

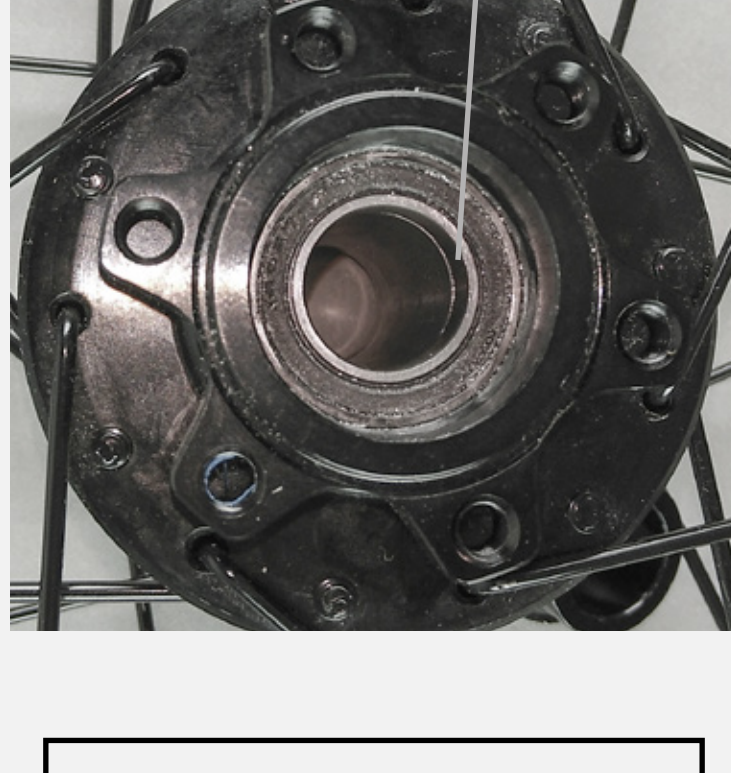
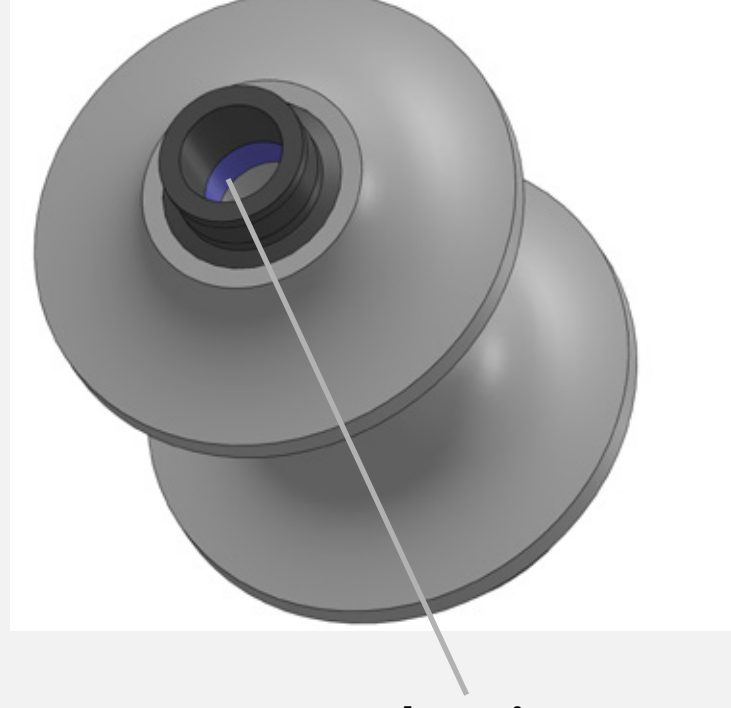
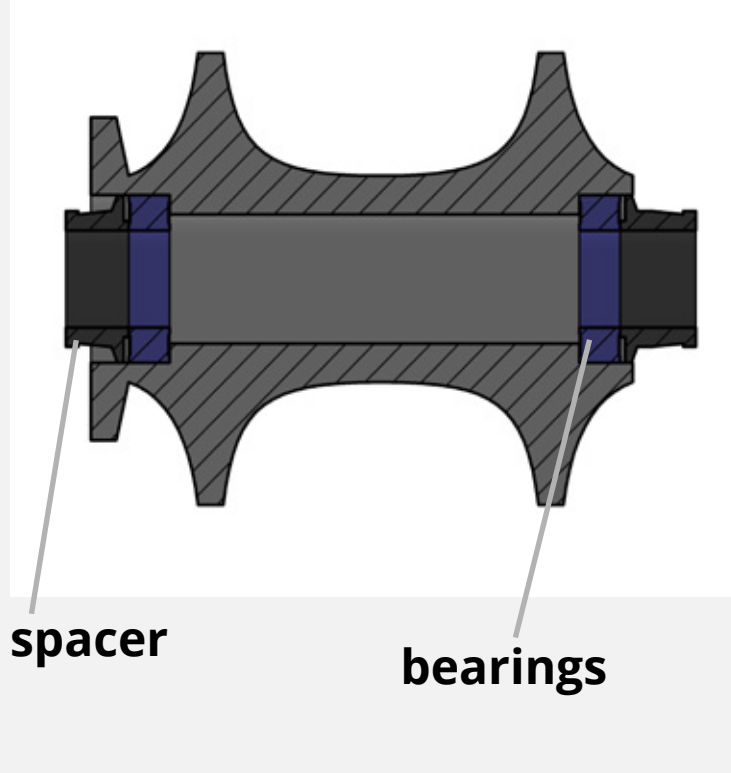
Warning!

3 step check



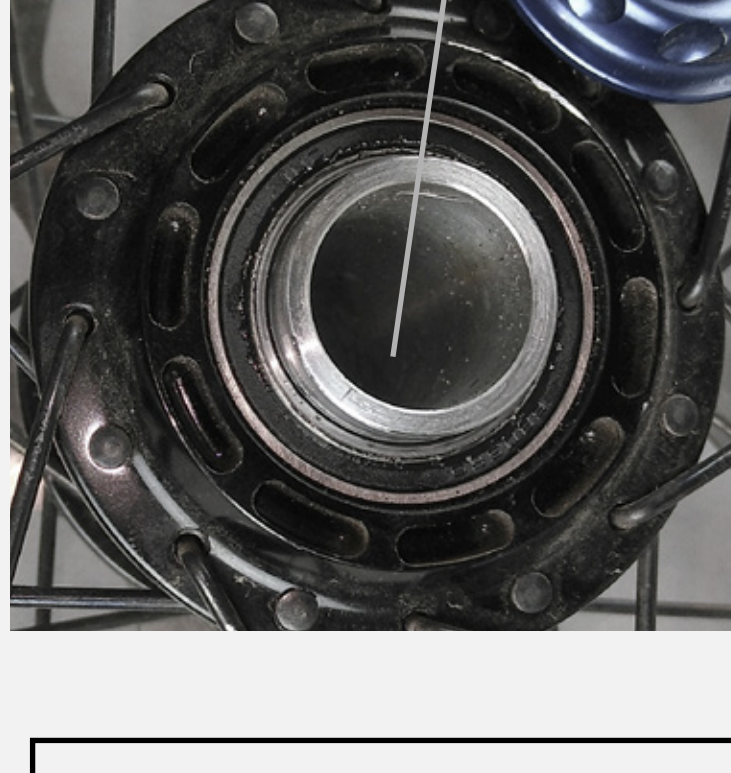
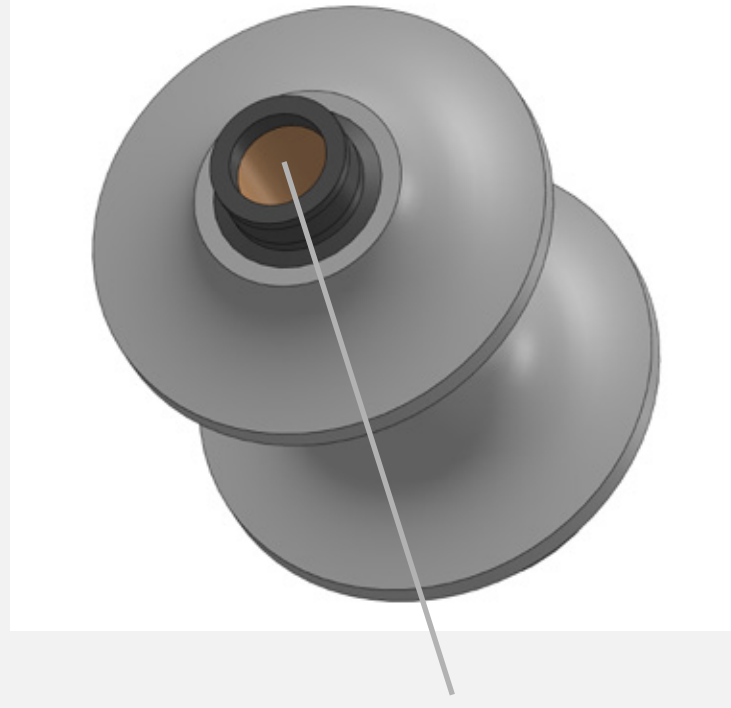
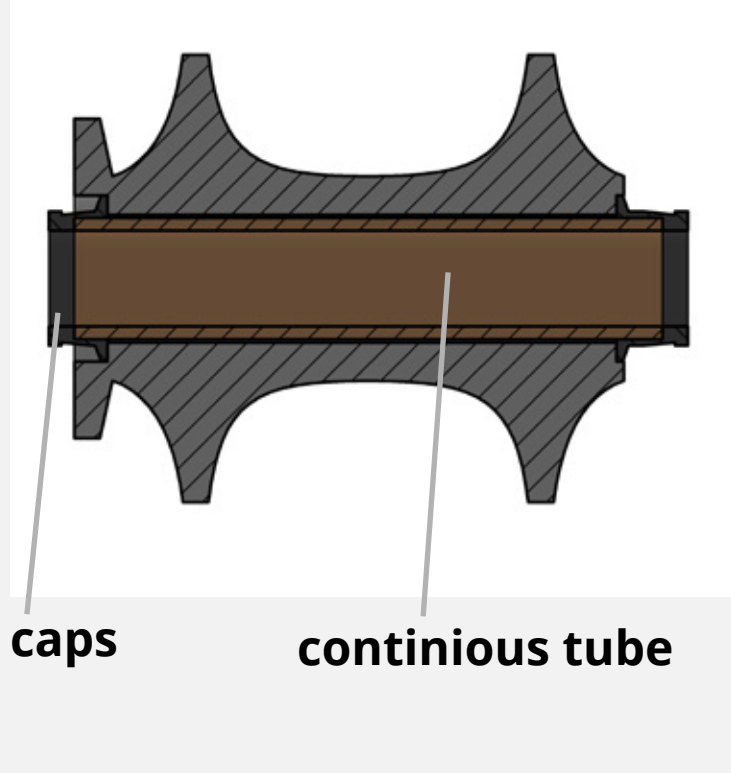
1 check, hub type

spacer



proceed with
check 02

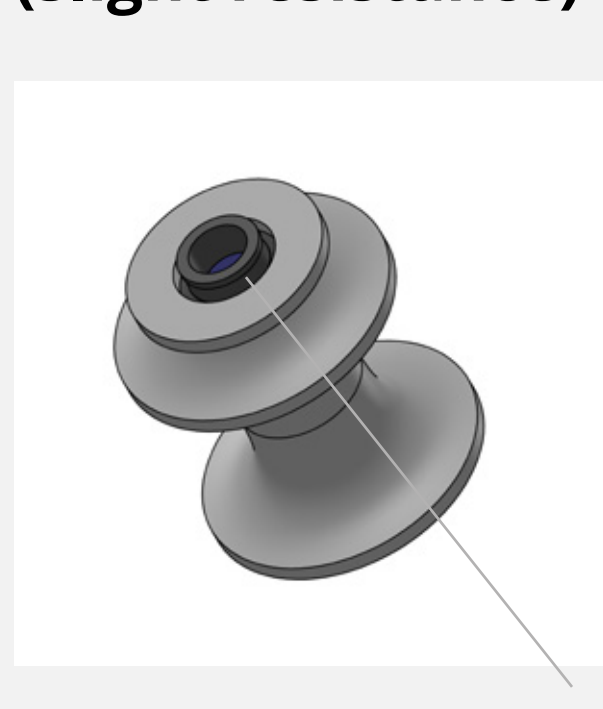
capsule



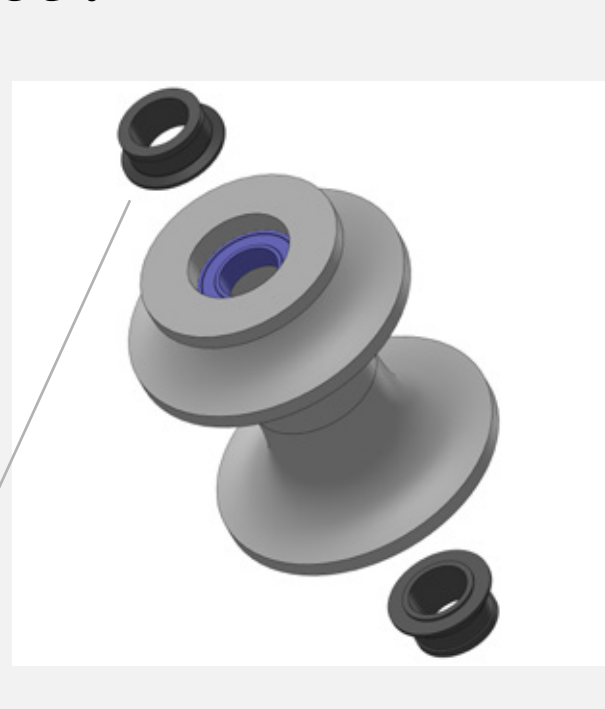
you are
good to go

2 check, removable spacers

can you remove the spacers
(slight resistance) or not ?



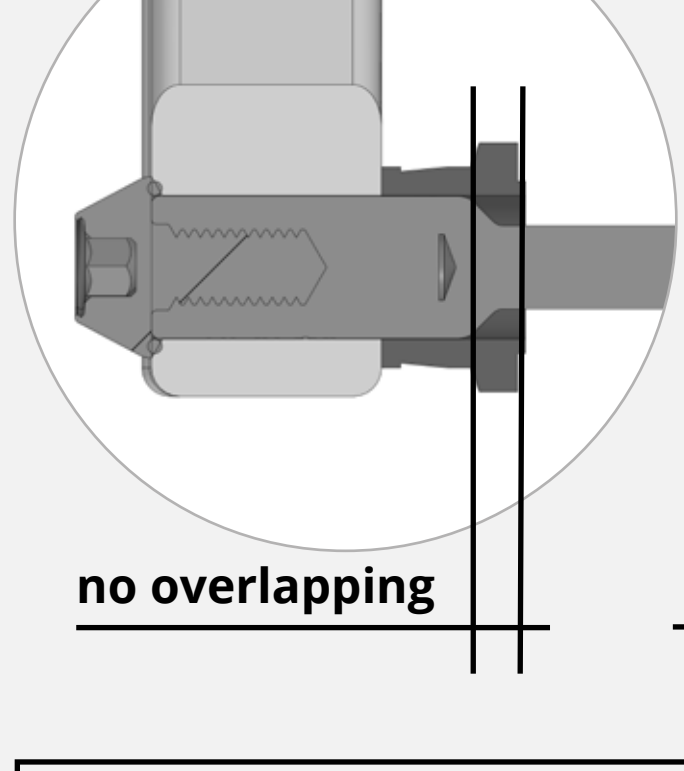
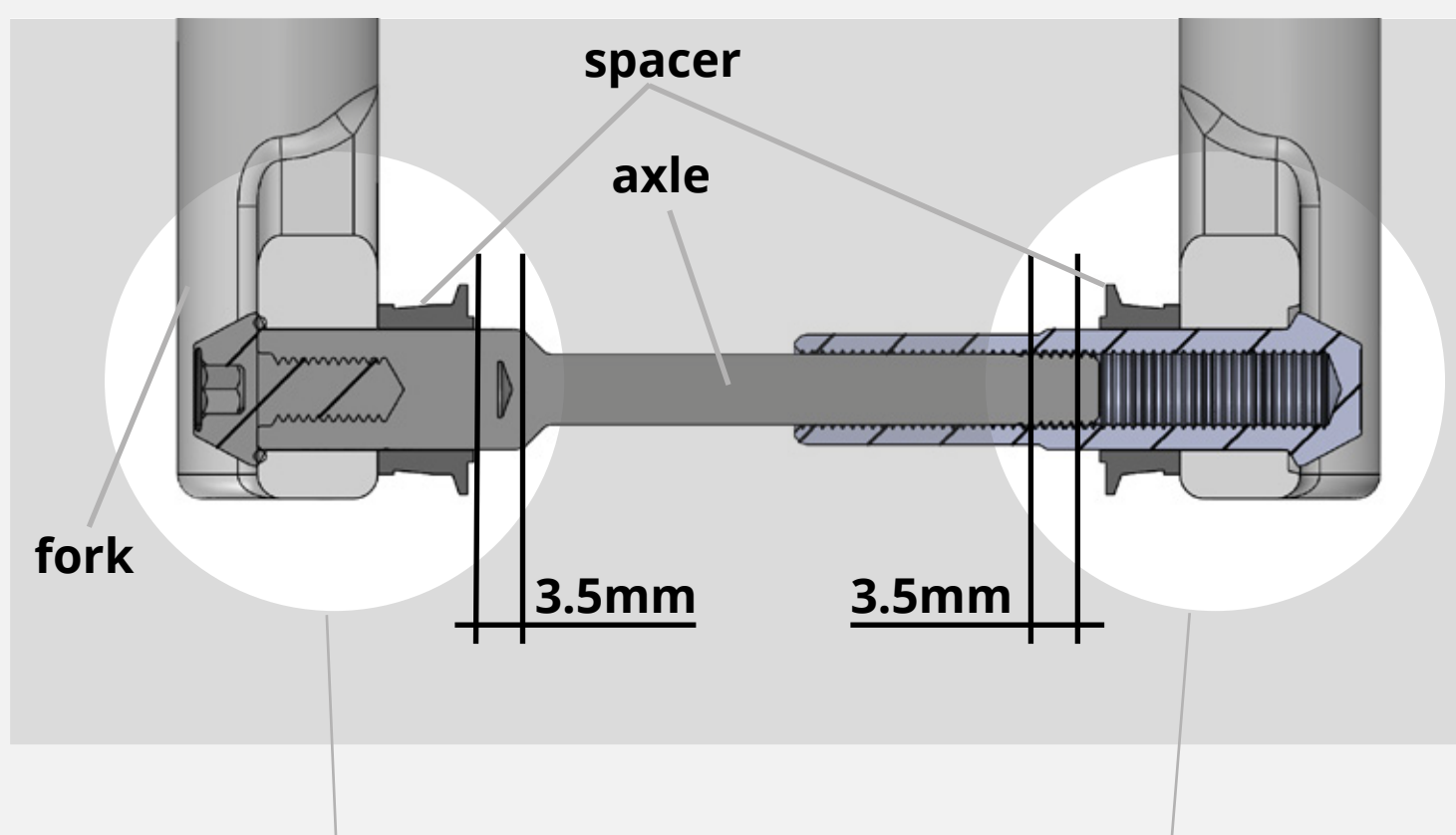
fixed spacers
do not use the
axle!



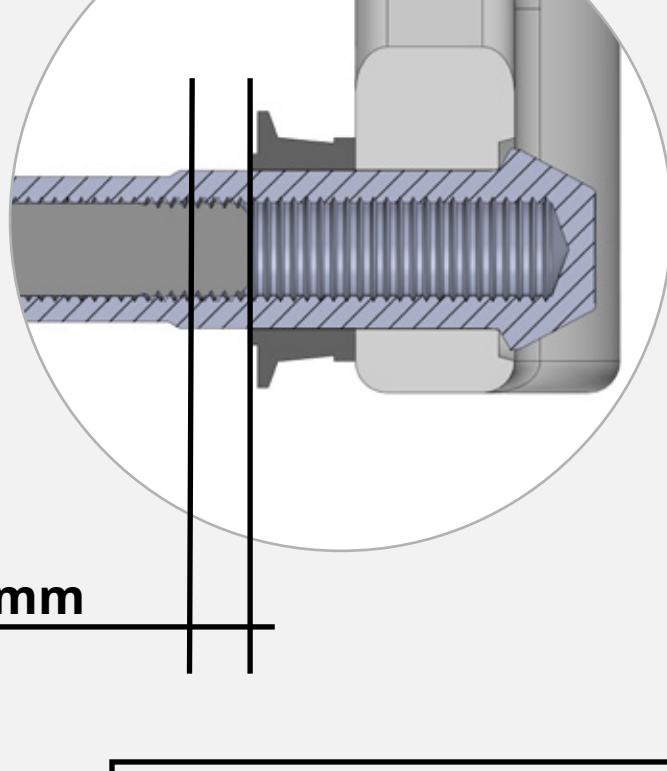
removable
spacers,
perform
check 3

3 check, fork with spacers

place the axle and spacers in the fork
and measure the overlap on both sides



less than 3.5 mm,
do not use the axle
on this hub!



3.5mm or more on
both sides, safe to
use

if you encounter problems
or have any question don't
hesitate to contact us

support@hexlox.com

+49 30 77325821

HEXLOX