







EM3 EV

400" Edition Fat Bike

SURLY Larry 38





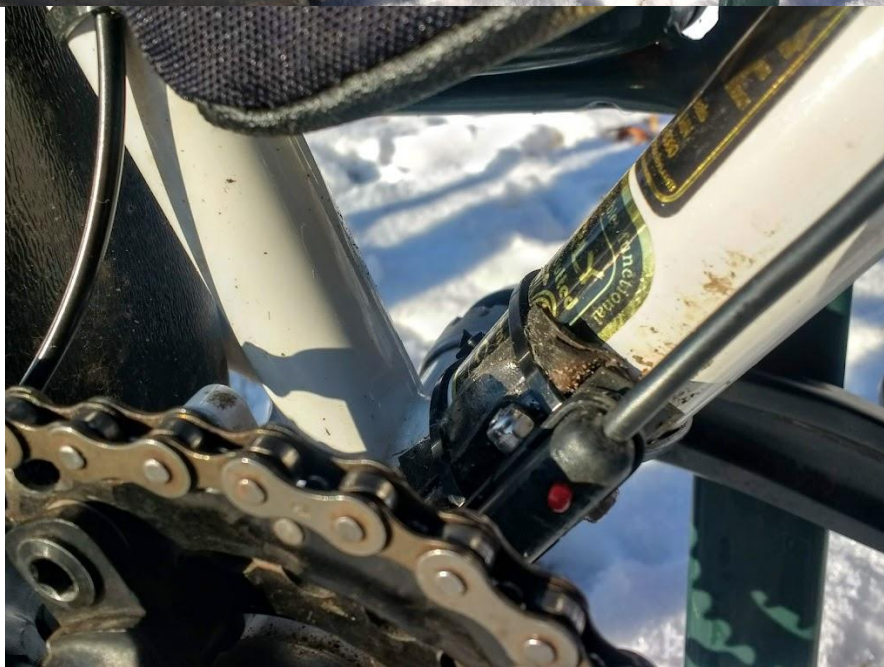




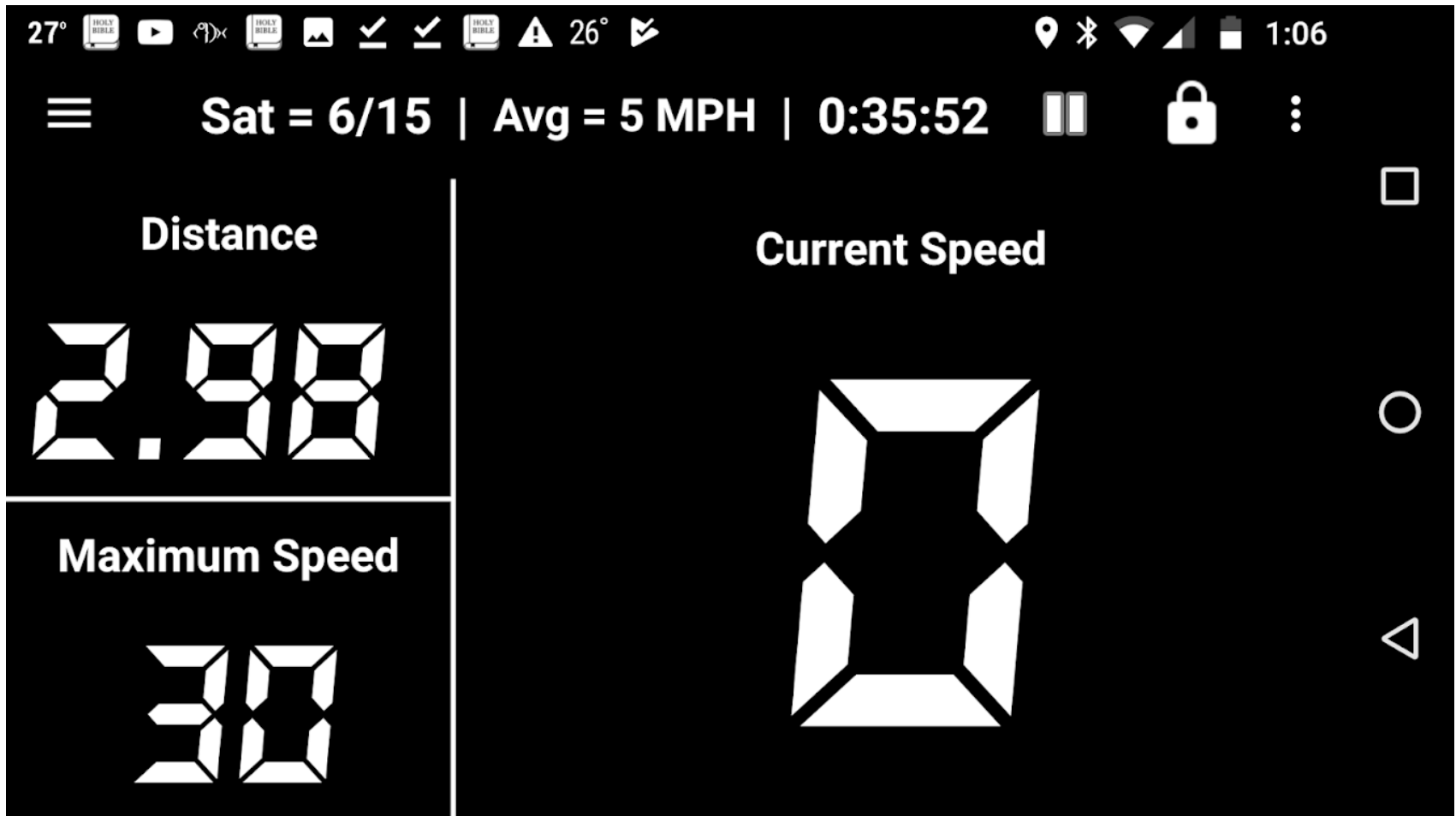








# Max speed at 1200 Watts



## Actual Costs -All-season eBike

| Item  | Cost           |
|---|----------------|
| Surly Puglsey like-new-demo + Thudbuster seat post. | \$1,200        |
| Grin TCDM IGH Kit, lights, freight                  | \$1,286        |
| Phaserunner FOC Controller upgrade                  | \$170          |
| 52V 26.6 Ah Battery EM3ev                           | \$1,109        |
| Big O Fenders                                       | \$125          |
| Rear Rack   | \$75           |
| Roloff Disk   | \$75           |
| 1/8" chain KMC s-10                                 | \$25           |
| Ergon 3/4 grips                                     | \$43           |
| Misc hardware                                       | \$25           |
| V-Speedster Tires                                   | \$120          |
| Labor   | Free           |
| <b>Total investment</b>                             | <b>\$4,564</b> |