

## MA504 / MA504L 可調式立管 組裝和操作說明書

### MA504 / MA504L ADJUSTABLE STEM ASSEMBLY AND OPERATION INSTRUCTION

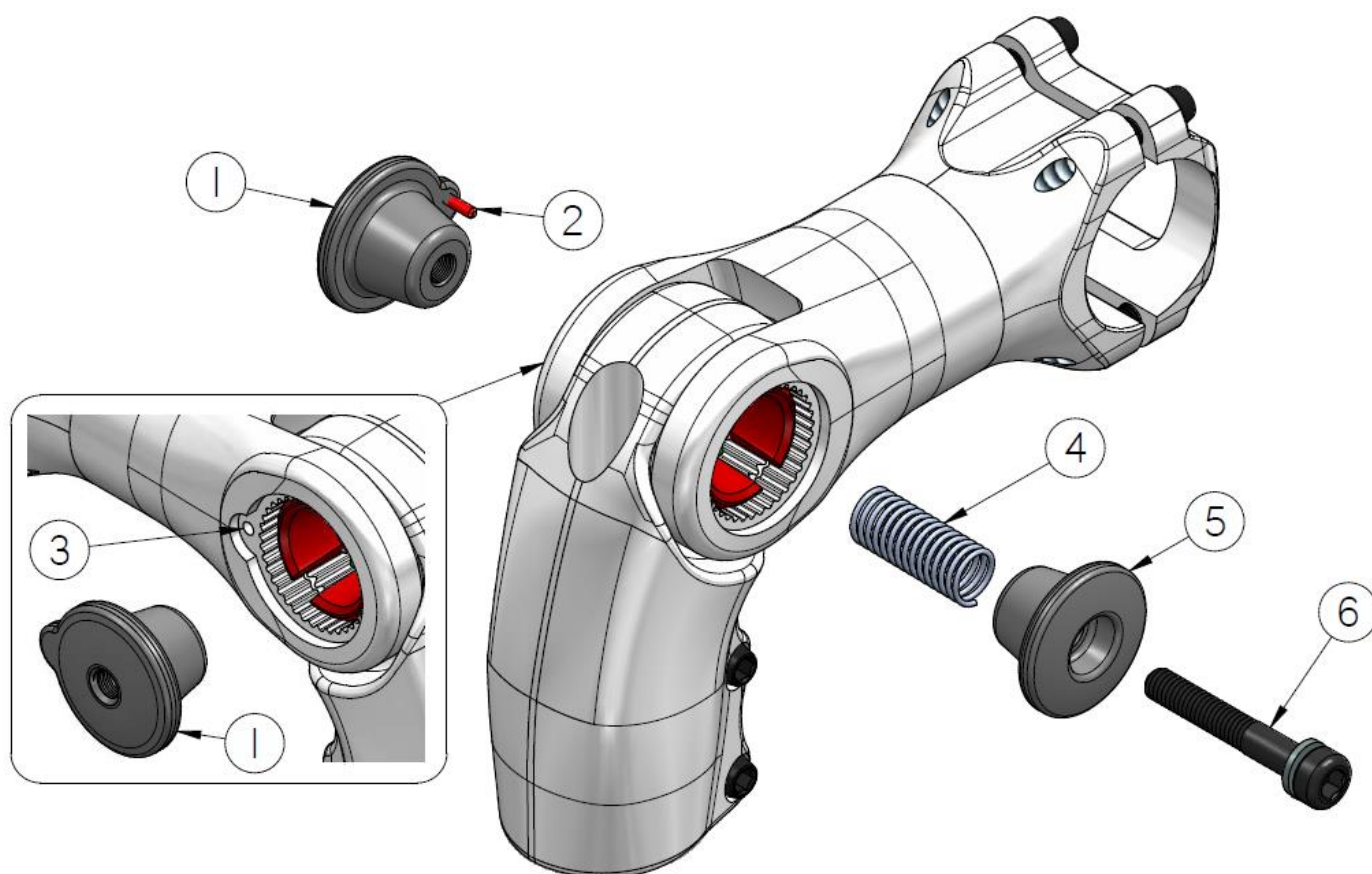
#### ✓ 組裝 ASSEMBLY

1.

- ▶ 將左調整塊 ① 從左側放入立管，調整塊上的插銷 ② 要對準立管上的孔 ③ 才能放入。
- ▶ Put the left adjustable piece ① into the stem from the left side. The pin of adjustable piece ② should be aligned with the hole ③ to be inserted.

2.

- ▶ 將彈簧 ④、右調整塊 ⑤ 及螺絲 ⑥ 從右側放入立管，鎖緊螺絲後，即固定立管。
- ▶ Put the spring ④, right adjustable piece ⑤ and screw ⑥ into the stem from the right side, and fix the stem after tightening the screw.



## MA504 / MA504L 可調式立管 組裝和操作說明書

### MA504 / MA504L ADJUSTABLE STEM ASSEMBLY AND OPERATION INSTRUCTION

#### ✓ 操作 OPERATION

1.

- ▶ 請先安裝 車把 ⑦ 在立管上。
- ▶ Please install the handlebar ⑦ on the stem.

2.

- ▶ 將 螺絲 ⑧ 旋鬆，若左右調整塊皆有彈出 ⑨，即可做角度調整；若左右調整塊未彈出，請壓螺絲頭使一邊調整塊推出後 ⑩，再操作步驟 3。
- ▶ Loose the screw ⑧. If both adjustable pieces are separated ⑨, it could adjust the angle. If both adjustable pieces aren't separated, press the screw head to push one side piece out ⑩, and then proceed to step 3.

3.

- ▶ 雙手握住車把兩端，上下搖晃車把 ⑪，直到左右調整塊皆彈出後 ⑨，即可做角度調整。
- ▶ Hold the ends of handlebar and shake the handlebar ⑪ until both adjustable pieces are separated ⑨. It could adjust the angle.

