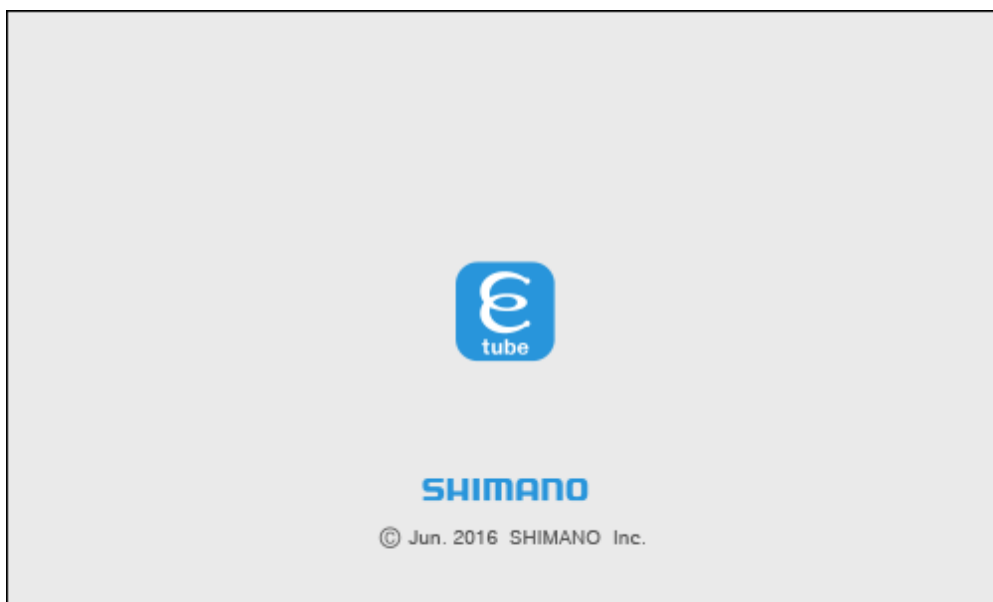


SHIMANO



Application Instruction Manual (MTB Edition)



Thank you for purchasing Shimano products.

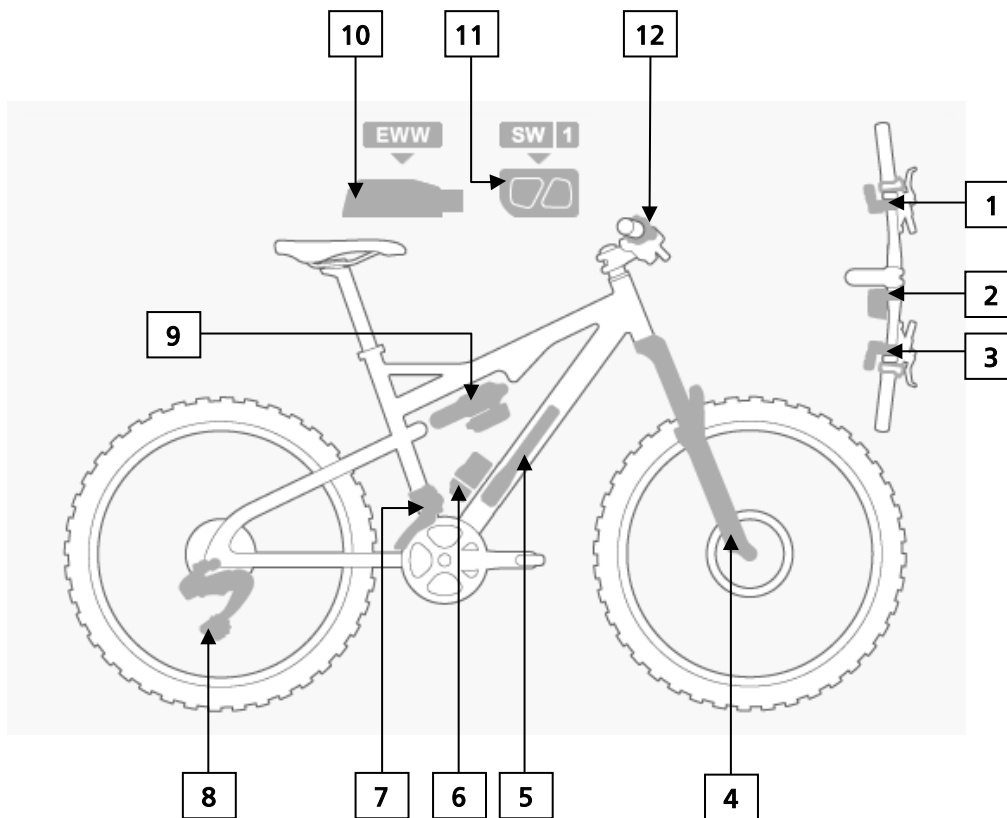
- This instruction manual explains the operation of the E-TUBE PROJECT. Be sure to read this manual before use in order to fully utilize the functions.
 - In order to use E-TUBE PROJECT, the SM-PCE1 or SM-BCR2 interface is required.
-

Check the following support site for the latest support information.
<http://e-tubeproject.shimano.com>

CONTENTS

Model corresponding to each part.....	3
CUSTOMIZE	4
Display monitor settings.....	5
Switch setting.....	6
Shifting switch function setting	6
Suspension switch function setting (Control switch)	8
Suspension switch function setting (Suspension switch setting).....	9
Shift mode setting	10
Suspension type setting.....	12
Multi shift mode setting	12
ERROR CHECK	13
Operation counter	13
ABOUT THIS DOCUMENT	14
REGISTERED TRADEMARKS AND TRADEMARKS.....	14

Model corresponding to each part

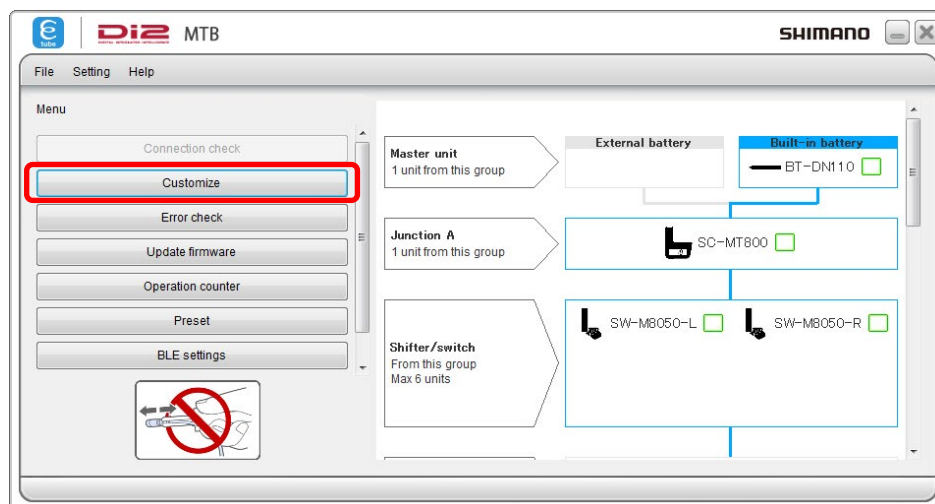


1. SW-M9050, SW-M8050
2. SC-M9050, SM-EW90-A/B, SC-MT800
3. SW-M9050, SW-M8050
4. FOX # 820-00-876, FOX # 820-09-002
5. SM-BTR2, BT-DN110
6. SM-BMR1, SM-BMR2, BM-DN100
7. FD-M9050, FD-M9070, FD-M8070
8. RD-M9050, RD-M8050
9. FOX # 820-00-877, FOX # 820-09-010
10. SM-EWW01, EW-WU101
11. ST-6770-L/R, ST-9070-L/R, ST-6870-L/R, ST-R785-L/R, ST-9071-L/R, ST-6871-L/R, ST-S705, SW-R671-L/R, SW-9071-L/R, SW-R600, SW-S705, SW-E6000 for Shift
12. FOX # 820-00-878, FOX # 820-09-006

CUSTOMIZE

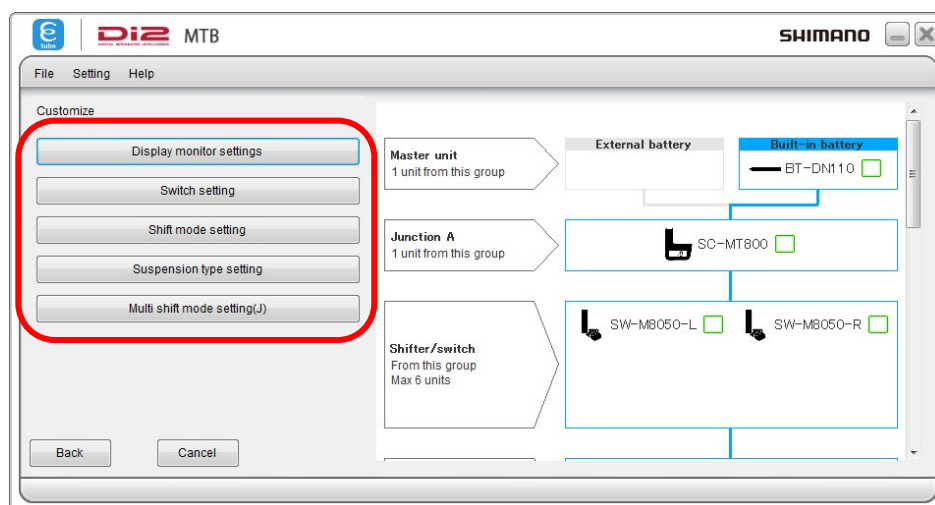
This function is used to customize the gear shifting system.

1. Click [Customize] in the main screen.



(Main menu screen)

2. Click [Display monitor settings], [Switch setting], [Shift mode setting], [Suspension type setting], or [Multi shift mode setting] in the customize menu screen to go to each setting screen.

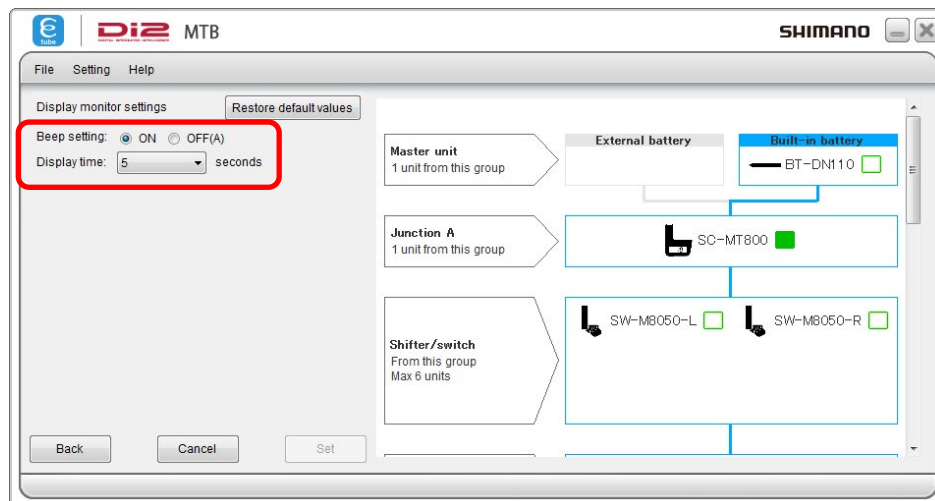


(Customize menu screen)

Display monitor settings

The settings of the display monitor can be changed as follows.

1. Display the customize menu screen.
2. Click [Display monitor settings] in the customize menu screen.
3. Click each item to select the settings description.



The items that can be set are as follows.

Item	Description
Beep setting	Select whether to turn the beep on or off.
Display time	Set the time until the display turns off when it is not in operation.

- * Clicking [Restore default values] and then [Set] restores the display monitor settings to default.

4. Click [Set] to complete set up.

Switch setting

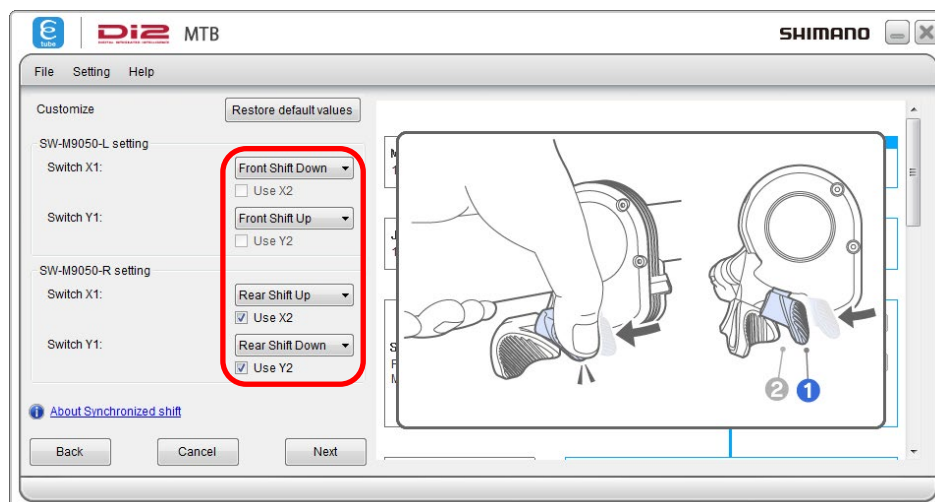
The settings of the switch unit and suspension switch can be changed as follows.

1. Display the customize menu screen.
2. Click [Switch setting] in the customize menu screen.
3. To change the settings of the switch unit, click [Shifting switch function setting]. To change the settings of the suspension switch, click [Suspension switch function setting].

Shifting switch function setting

In this screen, you can switch the functions of each switch.

1. Click [Shifting switch function setting] in [Switch setting] in the customize menu screen.
2. Select the desired setting for each switch.



The items that can be set are as follows.

<SW-M9050-L/SW-M9050-R>

Item	Description
[Front Shift Up]	Shifts the front derailleur from a smaller chainring to a larger chainring.
[Front Shift Down]	Shifts the front derailleur from a larger chainring to a smaller chainring.
[Rear Shift Up]	Shifts the rear derailleur from a larger sprocket to a smaller sprocket.
[Rear Shift Down]	Shifts the rear derailleur from a smaller sprocket to a larger sprocket.
[Use X2]	(X2) switch is enabled.
[Use Y2]	(Y2) switch is enabled.

<SW-S705>

Item	Description
[Rear Shift Up]	Shifts the rear derailleur from a larger sprocket to a smaller sprocket.
[Rear Shift Down]	Shifts the rear derailleur from a smaller sprocket to a larger sprocket.

<SW-E6000 for Shift>

Item	Description
[Display]	Switch the screens of the display monitor.
[Rear Shift Up]	Shifts the rear derailleur from a larger sprocket to a smaller sprocket.
[Rear Shift Down]	Shifts the rear derailleur from a smaller sprocket to a larger sprocket.

<Other supported units>

Item	Description
[Front Shift Up]	Shifts the front derailleur from a smaller chainring to a larger chainring.
[Front Shift Down]	Shifts the front derailleur from a larger chainring to a smaller chainring.
[Rear Shift Up]	Shifts the rear derailleur from a larger sprocket to a smaller sprocket.
[Rear Shift Down]	Shifts the rear derailleur from a smaller sprocket to a larger sprocket.

- * Clicking [Restore default values] and then [Set] restores each of the switches functions to default.

3. Click [Set] to complete set up.

Suspension switch function setting (Control switch)

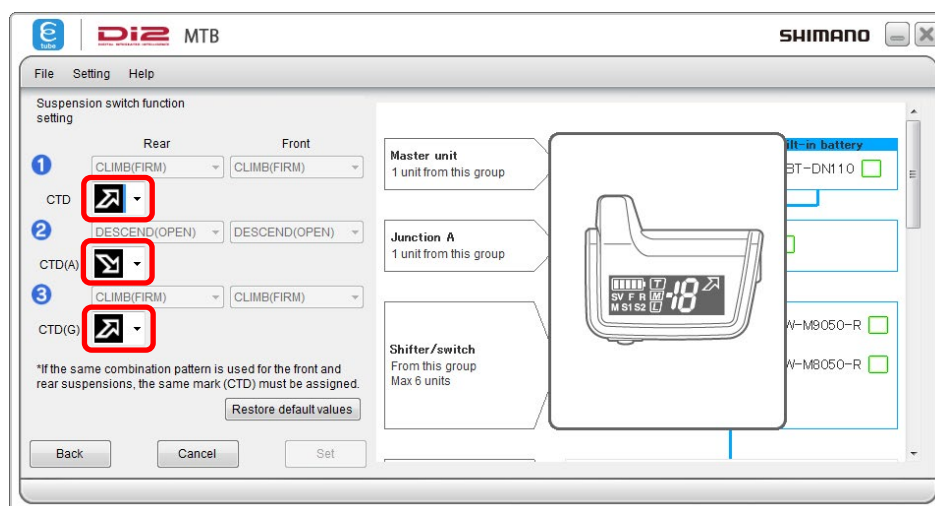
Suspension function settings can be changed when suspension control is assigned to the control switches.

1. Click [Suspension switch function setting] in [Switch setting] in the customize menu screen.
2. Select the side of the handlebar that your switch is mounted on and click [Next].
3. Set the function of each switch. If a version of FOX #820-00-878 earlier than 3.0.0 is connected, click [Set] to complete the setting. If this is not the case, click [Next] and go to step 4.

For details on the operating procedure up to this point, refer to the following manual.

- [MTB FOX](#)

4. Select the arrow marks (CTD) to be displayed from the pull-down menu.
 - Specify which arrow mark (CTD) is to be assigned to each of the suspension switch positions.



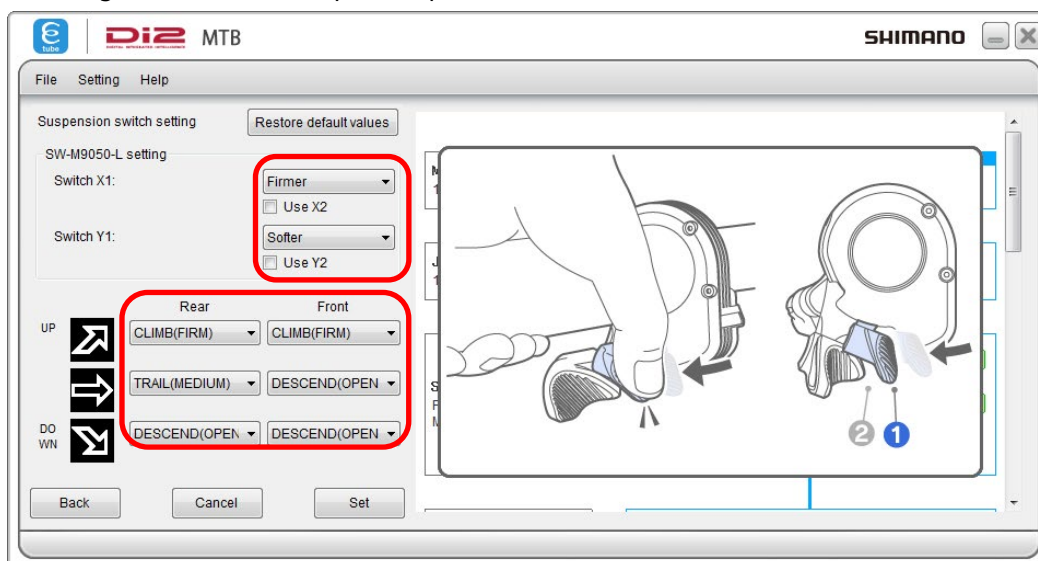
- * If the same combination pattern of front and rear suspensions is used, the same arrow mark (CTD) can be assigned.
 - * If different combination patterns of front and rear suspensions are used, the same arrow mark (CTD) cannot be assigned.
5. Click [Set] to complete set up.

Suspension switch function setting (Suspension switch setting)

Suspension function settings can be changed by SW-M8050-L and SW-M9050-L.

- Click [Suspension switch function setting] in [Switch setting] in the customize menu screen.
 - If several SW-M8050-L or SW-M9050-L are used, follow the instructions and select the unit to set.
- Select the desired setting for each switch.

Item	Description
[Firmer]	Makes the suspension firmer.
[Softer]	Makes the suspension softer.
- Select the mode to use the front and rear suspensions in.
 - If CD mode is selected, you will have the option whether to display the indication for the disabled TRAIL (→).
Select the preferred display mode.
- Use the pull-down menus to select the function of each switch and the assignments for the arrow marks (CTD).
 - Assign rear and front suspension position combinations to each arrow mark (CTD).



- If the same setting has been chosen for both the fork and rear shock switches, a [Confirm] dialog will appear prompting you to confirm the practicality of the selected switch mode choices after the [Set] button is clicked.
- Click [Set] to complete set up.

Shift mode setting

The settings of the synchronized shift map can be changed as follows.

Synchronized shift is a function to automatically shift the front derailleur in synchronization with the shifting of the rear derailleur.

1. Display the customize menu screen.
2. Click [Shift mode setting] in the customize menu screen.
 - When more than one combination of teeth is available, a screen appears prompting you to select the number of teeth. Select the number of teeth to use. The Synchronized shift map setting screen is displayed.
3. Dragging the green or blue cell allows you to change the synchronized shift map.
 - * A synchronized shift map shows the gear positions and the number of teeth on the crank, the positions and the number of teeth on the cassette sprocket, and the gear ratio at each gear position, with green and blue cells where synchronized shifting is performed at those gear positions. A green cell indicates upshifting. A blue cell indicates downshifting.

Synchronized shift map setting

Copy map2 Restore default values Copy map1 Restore default values

Synchronized shift map 1			FC/Gear Position			Synchronized shift map 2			FC/Gear Position		
			22T	30T	40T				22T	30T	40T
			Low	Middle	Top				Low	Middle	Top
CS/Gear Position	40T	Low	0.55	0.75	1.00	CS/Gear Position	40T	Low	0.55	0.75	1.00
	35T	2	0.63	0.86	1.14		35T	2	0.63	0.86	1.14
	31T	3	0.71	0.97	1.29		31T	3	0.71	0.97	1.29
	27T	4	0.81	1.11	1.48		27T	4	0.81	1.11	1.48
	24T	5	0.92	1.25	1.67		24T	5	0.92	1.25	1.67
	21T	6	1.05	1.43	1.90		21T	6	1.05	1.43	1.90
	19T	7	1.16	1.58	2.11		19T	7	1.16	1.58	2.11
	17T	8	1.29	1.76	2.35		17T	8	1.29	1.76	2.35
	15T	9		2.00	2.67		15T	9		2.00	2.67
	13T	10		2.31	3.08		13T	10		2.31	3.08
11T	Top		2.73	3.64	11T	Top		2.73	3.64		

OK Cancel

- * Clicking [Copy map1] copies the synchronized shift map in map 1 to map2.
- * Clicking [Copy map2] copies the synchronized shift map in map2 to map1.
- * Clicking [Restore default values] restores the synchronized shift map to default.
- * While the green or blue cell is being dragged, the cells outside the movable range are grayed out as shown below. (The following image shows an example where the cell at Low in FD and at 3rd in RD is being dragged.)

Synchronized shift map setting

Copy map2 Restore default values

Synchronized shift map 1			FC/Gear Position		
			22T	30T	40T
			Low	Middle	Top
CS/Gear Position	40T	Low	0.55	0.75	1.00
	35T	2	0.63	0.86	1.14
	31T	3	0.71	0.97	1.29
	27T	4	0.81	1.11	1.48
	24T	5	0.92	1.25	1.67
	21T	6	1.05	1.43	1.90
	19T	7	1.16	1.58	2.11
	17T	8	1.29	1.76	2.35
	15T	9		2.00	2.67
	13T	10		2.31	3.08
11T	Top		2.73	3.64	

OK Cancel

4. Clicking [OK] applies the changed synchronized shift map to the bicycle.

To enable comfortable synchronized shifting, the movable range of a cell is determined by the rules below.

■ Outward Synchronized

- Synchronized source gear position on RD \geq Synchronized target gear position on RD
- The synchronized target gear ratio can be selected from gear ratios up to one smaller than the synchronized source gear

■ Inward Synchronized

- Synchronized source gear position on RD \leq Synchronized target gear position on RD
- The synchronized target gear ratio can be selected from gear ratios up to one larger than the synchronized source gear

■ The blue arrow is located above the green arrow

For example, assume that you move the green cell from Middle in FD and 2nd in RD to Middle in FD and 3rd in RD.

The green cell signaled by the arrow can be moved up to 5th in RD.

Synchronized shift map setting

Copy map2

Restore default values

Synchronized shift map 1			FC/Gear Position		
			22T	30T	40T
CS/Gear Position	40T	Low	0.55	0.75	1.00
	35T	2	0.63	0.86	1.14
	31T	3	0.71	0.97	1.29
	27T	4	0.81	1.11	1.48
	24T	5	0.92	1.25	1.67
	21T	6	1.05	1.43	1.90
	19T	7	1.16	1.58	2.11
	17T	8	1.29	1.76	2.35
	15T	9		2.00	2.67
	13T	10		2.31	3.08
	11T	Top		2.73	3.64

OK

Cancel



The green cell signaled by the arrow can be moved up to 6th in RD.

Synchronized shift map setting

Copy map2

Restore default values

Synchronized shift map 1			FC/Gear Position		
			22T	30T	40T
CS/Gear Position	40T	Low	0.55	0.75	1.00
	35T	2	0.63	0.86	1.14
	31T	3	0.71	0.97	1.29
	27T	4	0.81	1.11	1.48
	24T	5	0.92	1.25	1.67
	21T	6	1.05	1.43	1.90
	19T	7	1.16	1.58	2.11
	17T	8	1.29	1.76	2.35
	15T	9		2.00	2.67
	13T	10		2.31	3.08
	11T	Top		2.73	3.64

OK

Cancel

Suspension type setting

Refer to the following manual for the operating procedure.

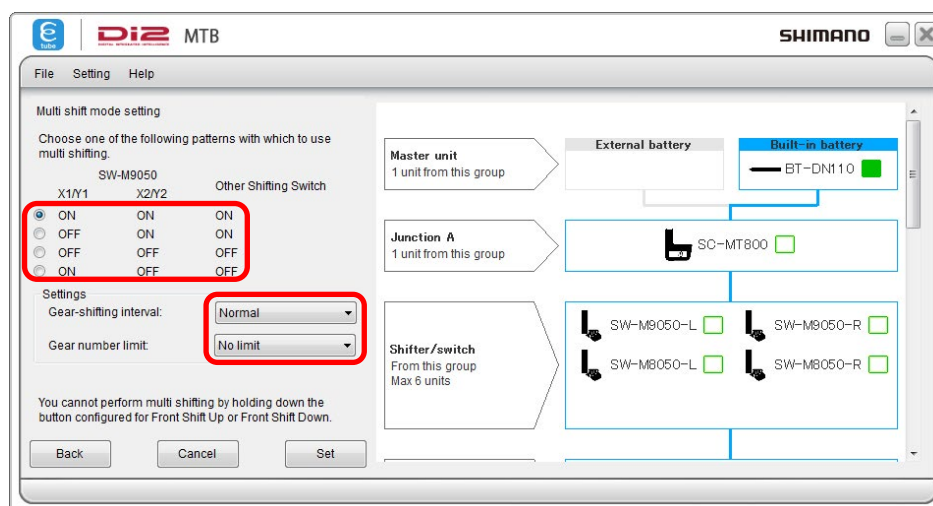
- [MTB FOX](#)

Multi shift mode setting

The multi shift mode setting can be changed.

Multi-shifting is a function to shift the rear derailleur by several gears in a row by holding down the shift switch. (Multi-shifting cannot be used for the front derailleur.)

- * To perform the multi shift mode setting, a battery unit or a battery mount unit needs to be connected in addition to the derailleur.
1. Display the customize menu screen.
 2. Click [Multi shift mode setting] in the customize menu screen.
 - Information on the settings in this menu is displayed. Close after checking.
 3. Click each item to select the settings description.



The items that can be set are as follows.

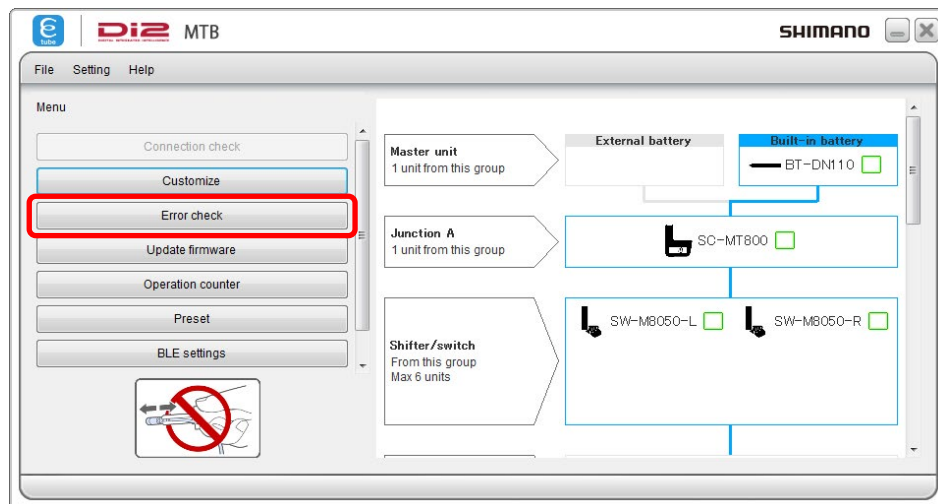
Item	Description
[Multi shift mode setting]	Whether the multi shift mode is used or not can be selected. If you use a 2-step switch, you can select [ON] or [OFF] for each step. For other switches, select [ON] or [OFF] in [Other Shifting Switch].
[Gear-shifting interval]	The gear-shifting interval for multi shift can be selected from five levels.
[Gear number limit]	A limitation can be placed on the number of gears that are shifted with one long press.

4. Click [Set] to complete set up.

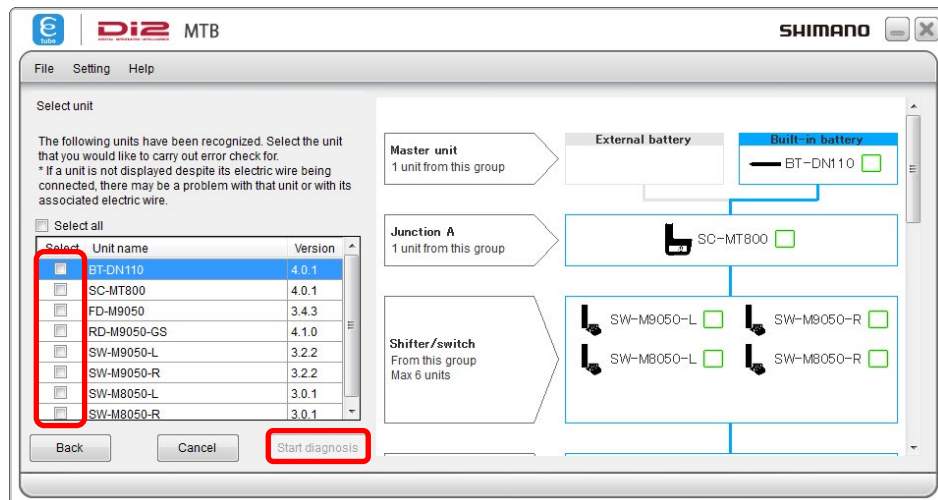
ERROR CHECK

When a single unit or multiple units are connected, this function checks their operation and identifies any units which have a problem.

1. Click [Error check] in the main menu screen.



2. Select the unit you want to check and then click [Start diagnosis].
 - An error check of the selected unit will start. Perform operations following the instructions on the screen.



Operation counter

Refer to the following manual for the operating procedure.

- [MTB FOX](#)

ABOUT THIS DOCUMENT

The contents of this document are subject to revision in the future without notice.

Reproducing or transmitting this document in whole or in part in any form or for any purpose whatsoever without the express written permission of SHIMANO INC. is expressly forbidden. However, this is not to be taken as a limit on the customer's rights under applicable copyright laws.

SHIMANO INC. may own the rights to any patents, patent applications, trademarks, copyrights and any other intangible property rights contained in this document. Unless otherwise specified, the customer is not granted rights to any patents, trademarks, copyrights or any other intangible intellectual property contained in this document.

REGISTERED TRADEMARKS AND TRADEMARKS

Shimano is a trademark or registered trademark of SHIMANO INC. in Japan and other countries.



is a trademark of SHIMANO, INC. in Japan and other countries.

Microsoft®, Windows Vista™, Windows® 7, Windows® 8, Windows® 10 are registered trademarks or trademarks of Microsoft Corporation in the United States of America and other countries.

All other company names, product names and service names, etc. are the property of their respective owners.

SHIMANO

SHIMANO AMERICAN CORPORATION

One Holland, Irvine, California 92618, U.S.A. Phone: +1-949-951-5003

SHIMANO EUROPE B.V.

Industrieweg 24, 8071 CT Nunspeet, The Netherlands Phone: +31-341-272222

SHIMANO INC.

3-77 Oimatsu-cho, Sakai-ku, Sakai-shi, Osaka 590-8577, Japan

Please note: specifications are subject to change for improvement without notice. (English)