

# THE HAIBIKE PRESS KIT 2019

---



# HAIBIKE PRESSKIT 2019

---

**01 FLYON**

---

**02 Yamaha Intube**

---

**03 Life Ladies**

---

**04 eConnect**

---

**05 Yount**

---

## CONTACT & DOWNLOAD

---



**Jasmin Schindelmann**

Public Relations

Winora-Staiger GmbH

Max-Planck-Straße 4-8

97526 Sennfeld

Deutschland

Phone: +49 (0) 9721 6501 - 8684

Fax: +49 (0) 9721 6594 - 45

jasmin.schindelmann@winora-group.de

PressKit Download

**haibike.com/presskit**



HAIBIKE.COM  
WINORA GROUP | FLYON 2019

**HAIBIKE**

FLYON INSIGHT

# DESIGNED & ENGINEERED IN GERMANY



“FOR 2019, WE ARE INTRODUCING FOR THE FIRST TIME A COMPLETE HAIBIKE EPERFORMANCE SYSTEM.”

**HAIBIKE**

“WHETHER DESIGN, INTEGRATION, PERFORMANCE OR DIGITALIZATION – FLYON SETS NEW STANDARDS IN ALL FIELDS!”

“With FLYON, our vision was to bring the first-ever Haibike ePerformance system to life in a design language which not only embodies Haibike’s brand values but enhances them. Haibike’s core values are being brave, leading, innovative and dynamic. FLYON speaks exactly this language, but also successfully bridges the gap to visible integration and digitalization. It’s radical simplicity and pure shapes mixed with dynamic lines and surfacing make FLYON the new ePerformance icon.”

— Benjamin Turck // Industrial Design Lead HDCM



“The eBike as we know it was completely rethought in order to launch the next generation of ePerformance. With FLYON we have been able to create a system according to our understanding and concepts. This system enables eBike riding as it should feel in our opinion: self-evidently and powerful. All components seamlessly integrate into the overall design, which convinces with a high level of integration.”

— Ingo Beutner // Head of Engineering Haibike





Discover a world full of new possibilities. Exploring new frontiers, by day and by night. With FLYON, we are introducing the next generation of ePerformance.

New motor, innovative operating concept, more connectivity and intelligent design: Whether in terms of integration, digitalization or performance – FLYON sets new standards in the high-end sector. Behind the first Haibike-own ePerformance system stands German engineering power combined with intelligent technology and many years of know-how.

All components have been developed by Haibike and fit in a system that can be operated easily and intuitively.

**HAIBIKE**



**RIDE  
OR**

**FLYON**

**HAIBIKE  
ePERFORMANCE  
SYSTEM**

COCKPIT  
HAIBIKE REMOTE

For the central interface between rider and system we developed a remote that can be operated intuitively, which follows the compact FLYON design language and provides perfect ergonomics: The mode switch is positioned below the handlebar and can be reached via thumb even during the ride. Not only the mode display serves as feedback, but also a clearly visible LED strap on the remote which changes the colour depending on the level of assistance.



“THE POSITION OF EVERY ELEMENT ON THE DISPLAY HAS A PURPOSE AND OFFERS A CLEAR BENEFIT FOR THE RIDER. THE OPERATION IS BOTH INTUITIVE AND SELF-EVIDENT.”  
– INGO BEUTNER, HEAD OF ENGINEERING



COCKPIT  
HAIBIKE HMI & SYSTEM CONTROL

The colour display centrally positioned above the stem is easy to read in every situation due to the transfective design. Current riding data and system information are displayed on four changeable screens. It is also possible to display and analyse training-relevant data such as pulse measurement, cadence or calorie consumption.





**HAIBIKE**

FRAME

**ALL NEW CARBON FRAME**

We designed and engineered a completely new frame platform around the FLYON models, made of high-quality carbon and utilising a strong and sturdy form language. The Haibike ePerformance system was designed with the goal of achieving a high level of integration through the development of a new, space-saving mounting system for the battery. The battery is inserted longitudinally into a closed profile down tube, which allows for a lighter and more stable construction.

INTEGRATION

**TTL – TWIN TAIL LIGHTS**

With the Haibike Twin Tail Lights you can keep on riding even after the sun sets! Eight highly-efficient LEDs make the eBike easily visible also from the side.



PROTECTION

**THE HAIBIKE SKIDPLATE**

The Haibike SkidPlate is a motor cover made of fibre-reinforced plastic and protects the motor effectively from direct impacts when you ride over obstacles as well as from dirt and impacts from stones and other trail debris.

ENGINE

**HAIBIKE HPR 120S**

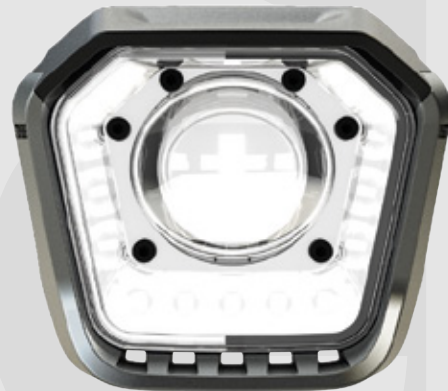
Conquer steep ascents, “fly” over trails, explore new frontiers and extend them: An extra strong power package — made in Germany — ensures the necessary power when you need it, with perfect modulation possible through the five custom assist modes. Together with the technology supplier TQ we developed a dynamic motor that is the most powerful mid motor on the market at the moment providing up to 120Nm torque. Thanks to it’s patented transmission the motor offers extreme power and efficiency in a compact package.

**FLYON**

**HAIBIKE  
ePERFORMANCE  
SYSTEM**

## LIGHT HAIBIKE SKYBEAMER

Why only master difficult trails and demanding routes by day? The Skybeamer is available in three versions with 150, 300 or 5.000 lumen meaning you can now safely stay out riding after dark! Parking your bike for the short and dark days during the winter months will now be a thing of the past thanks to the powerful headlight. With the Skybeamer 5000 we developed an independent system with daylight, which provides a classic low beam as well as a high beam light with over 5.000 lumen. The light can be operated manually via remote or fully automatically via a brightness sensor in the display.



## CHAINRING HAIBIKE DESIGNED & ENGINEERED 42T / 38T

A specially constructed and designed Direct Mount chain ring is available with 38 or 42 teeth to give you an optimum cadence and transmit power to the drivetrain. The alternating narrow wide tooth design helps to lock the chain to the chainring and stops your chain falling off over rough terrain.



## CLEAN INTEGRATED CABLE ROUTING

With the FLYON system we were able to set new standards regarding cable routing. Both hardtail and full-suspension bikes have all of their electric, hydraulic and mechanical cables routed through the frame. The benefits to this are improved reliability and clean optics giving the FLYON models a clean and elegant silhouette.

## BATTERY HAIBIKE INTUBE BATTERY 630Wh

Together with our technology partner BMZ we developed a 48 Volt battery with an extremely high energy density and 630Wh capacity. On the inside the battery connects via magnet to the system inside the frame and can be secured against theft by a lock developed in collaboration with ABUS. The battery level can be checked via touch sensor. The waterproof battery can be charged via a 4 amp charger either directly through the bike, or separately when removed. For retrofitting, Haibike provides a quick charging function: a 10 amp charger, which brings an empty battery to 80% battery level within only 60 minutes.





**HAIBIKE**

SPEED SENSOR

INTEGRATION

**SPEED SENSOR DISC**

A newly developed speed sensor disc sends 18 signals per rotation of the wheel to the system and measures the speed 18 times more accurately than any other system available on the market. In this way, the system is able to react significantly faster and more dynamically to changing requirements and recognises acceleration even at slow speeds, e.g. hill starts. The sensor itself is safely positioned out of the way of harm and integrated in the left frame dropout.

BLOCKING HEADSET  
**STEERING LOCKOUT**

The Block-lock headset in the new FLYON models limits the steering angle to the left and right and successfully stops your levers from hitting the top tube which can cause paint damage if your bars spin around.

**FLYON**

**HAIBIKE**  
**ePERFORMANCE**  
**SYSTEM**



HAIBIKE REMOTE

HAIBIKE SKYBEAMER

ALL NEW CARBON FRAME

HAIBIKE HMI & SYSTEM CONTROL

STEERING LOCKOUT

STEALTH SEATPOST

INTEGRATED CABLE ROUTING

MODULAR RAIL SYSTEM  
(MRS)

TWIN TAIL LIGHTS  
(TTL)

HAIBIKE INTUBE BATTERY 630WH

HPR 120S MOTOR

SKIDPLATE

SPEED SENSOR DISC

FLYON

HAIBIKE  
ePERFORMANCE  
SYSTEM

# NDURO

FLYON  
180mm

Our all new long travel FLYON models were designed to get you to the top of your favourite trails faster than ever before, ready to shred back down, again, and again.

Whilst other motors struggle to stay over 15 km/h on steep climbs, our HPR 120S motor with 120 Nm of torque keeps you at a steady 25 km/h in the new XTREME model! Flying uphill was never this fun before!

Thanks to 180 mm of terrain smoothing travel, Enduro focused geometry and our new carbon frames designed with a flip-chip, you can now customise your bikes geometry to find the most comfortable setup no matter your riding style or skill level.

With the amount of ground you will cover on this bike, and how often you will want to ride it, you will quickly become a better rider on the all new NDURO!

## XDURO NDURO 10.0



- Haibike Carbon / Aluminium Hybrid frame
  - Fork: FOX 36 Float FACTORY 27.5+ (Grip2) E Kashima  
Shock: Fox FACTORY Float X2, Kashima
  - Drivetrain: SRAM EX1  
Brakes: Magura MT7
  - Motor: HPR 120S / 250 Wh / 120 Nm  
Battery: 630 Wh Intube
  - Wheelset: DT FR1950  
Tires: Magic Mary EVO Soft 27.5" x 2.6"
- 8.999€

## XDURO NDURO 8.0



- Haibike Carbon / Aluminium Hybrid frame
  - Fork: FOX 36 Float Performance 27.5+ (Grip) E-Bike  
Shock: Fox Performance Float X2
  - Drivetrain: Shimano XT  
Brakes: Shimano M8020
  - Motor: HPR 120S / 250 Wh / 120 Nm  
Battery: 630 Wh Intube
  - Wheelset: Tryp35  
Tires: Magic Mary EVO Soft 27.5" x 2.6"
- 6.999€

## XDURO NDURO 5.0



- Haibike Carbon / Aluminium Hybrid frame
  - Fork: Yari RC 27B  
Shock: Deluxe RT/RL
  - Drivetrain: SRAM NX11  
Brakes: Magura MT5
  - Motor: HPR 120S / 250 Wh / 120 Nm  
Battery: 630 Wh Intube
  - Wheelset: Tryp35  
Tires: Minion 27.5" x 2.6" 120tpi 3C
- 6.299€

# ALLMTN

FLYON  
180mm

With the same all new HPR 120S motor as it's big brother, our 2018 FLYON ALLMTN models were designed and engineered to let you travel in first class up and down the trails!

The 29" front tire offers precision and rollover comfort, whilst the 27.5"+ tire on the back gives the 120 Nm motor traction to tackle the steepest climbs.

The flip-chip geometry of our new carbon fibre frame, coupled with a nimble 150 mm of suspension travel and our long lasting 630 Wh intube battery let you ride better, further and faster.

## XDURO ALLMTN 10.0



- Haibike Carbon / Aluminium Hybrid frame
  - Fork: DT Swiss F535\_One 27,5+/29" (Crown)  
Shock: DT Swiss R535
  - Drivetrain: SRAM XX1 Eagle  
Brakes: Magura MT7
  - Motor: HPR 120S / 250 Wh / 120 Nm  
Battery: 630 Wh Intube
  - Wheelset: DT HX1501 – Mix 29"/27.5"  
Tires: Minion 29" x 2.5–27.5" x 2.8 mixed
- 8.999€

## XDURO ALLMTN 8.0



- Haibike Carbon / Aluminium Hybrid frame
  - Fork: FOX 36 Float Perf. Elite 29" (Fit4) E-Bike  
Shock: Fox Perf. Elite Float DPX2
  - Drivetrain: Shimano XT  
Brakes: XT M8020
  - Motor: HPR 120S / 250 Wh / 120 Nm  
Battery: 630 Wh Intube
  - Wheelset: Tryp – Mix 29"/27.5"  
Tires: Minion 29" x 2.5–27.5" x 2.8 mixed
- 6.999€

## XDURO ALLMTN 5.0



- Haibike Carbon / Aluminium Hybrid frame
  - Fork: Yari RC 29B  
Shock: Deluxe RT
  - Drivetrain: SRAM NX11  
Brakes: Magura MT54
  - Motor: HPR 120S / 250 Wh / 120 Nm  
Battery: 630 Wh Intube
  - Wheelset: Tryp – Mix 29"/27.5"  
Tires: Minion 29" x 2.5–27.5" x 2.8 mixed
- 5.999€



# ALLTRAIL

FLYON  
140mm

At times everybody feels the need to spread their wings and set off into the unknown, and explore off the beaten track. To do that you need to be confident. The new HAIBIKE ALLTRAIL with the FLYON ePERFORMANCE SYSTEM gives you that confidence.

With 140mm of travel on the front and Plus tires you can rest assured that you will travel in comfort. The new HPR 120S motor offers five different assistance modes, so you can always find your groove, your perfect cadence, no matter how far, or on what kind of trail you want to ride. An integrated headlight and twin tail lights mean you no longer need to worry about being stuck out after dark either.

If you are looking for a bike that can ride all trails, the HAIBIKE ALLTRAIL is ready when you are.

# ADVENTR

FLYON  
140mm

Spontaneity is the best kind of adventure, and with an all new XDURO ADVENTR at your disposal, you are always ready to go!

Life was meant for adventure and with panniers, integrated lights, 120mm of travel on the front and the new FLYON system what are you waiting for?

Thanks to it's powerful motor, 630Wh battery and Weber connector for a trailer, the ADVENTR models can carry you and your cargo from the highest mountains to the deepest valleys.

From everyday adventures, to once in a lifetime journeys, our new ADVENTR model gives you the versatility to tackle a wide range of terrain and situations. A new world of possibilities beckons.



XDURO  
**ALLTRAIL 6.0**

- Haibike Carbon frame
  - Fork: RockShox Revelation RC 29B
  - Drivetrain: SRAM GX12  
Brakes: Magura MT5
  - Motor: HPR 120S / 250 Wh / 120 Nm  
Batttery: 630 Wh
  - Wheelset: DT Swiss H1900  
Tires: Minion 27.5" x 2.8" 120tpi 3C
- 5.999€



XDURO  
**ALLTRAIL 5.0**

- Haibike Carbon frame
  - Fork: SR SUNTOUR Raidon34 Boost
  - Drivetrain: SRAM NX11  
Brakes: Magura MT54
  - Motor: HPR 120S / 250 Wh / 120 Nm  
Batttery: 630 Wh
  - Wheelset: Tryp35-27.5"  
Tires: Schwalbe Nobby Nic 27.5" x 2.6"
- 4.999€



XDURO  
**ADVENTR 6.0**

- Haibike Carbon frame
  - Fork: SR SUNTOUR Aoin35 RLR
  - Drivetrain: Shimano XT 11-46  
Brakes: Shimano XT M8020 / M8000
  - Motor: HPR 120S / 250 Wh / 120 Nm  
Batttery: 630 Wh
  - Wheelset: Tryp35-27.5"  
Tires: Schwalbe Marathon Plus MTB 57-584 Reflex
- 5.999€



XDURO  
**ADVENTR 5.0**

- Haibike Carbon frame
  - Fork: SR SUNTOUR XCM34 Boost Coil LOR
  - Drivetrain: SRAM NX11  
Brakes: Magura MT54
  - Motor: HPR 120S / 250 Wh / 120 Nm  
Batttery: 630 Wh
  - Wheelset: Tryp35-27.5"  
Tires: Schwalbe Smart Sam 57-584 Reflex
- 4.999€





## Haibike extends Yamaha platform: Extra power with new, integrable 500Wh battery

Compact, powerful and perfectly integrated: As one of the first manufacturers, Haibike offers the new Yamaha 500Wh battery as an intube battery solution for the new model year 2019. With this efficient energy supplier the Bavarian manufacturer combines modern design and a beautifully shaped look with high-quality technology for all ePerformers.

The slim power cell with a high energy density currently is one of the lightest batteries in the market. Thanks to its compact size the lithium-ion battery can be perfectly integrated into the frame design. Besides the Bosch Powertube battery, the new one complements the Haibike Intube Battery Concept (IBC).

### Haibike Intube Battery Concept & Modular Rail System

Easy handling: The battery integrated into the down tube is protected by a skidplate made of impact-resistant plastic and can be removed within seconds. Comfortable charging directly at the eBike is just as possible as charging the removed battery which is protected from environmental influences by the hydroformed frame tube and a form-fitting battery cover.

With the battery integrated in the frame, Haibike reflects a trend that has been perfectly complemented by the Modular Rail System (MRS). The patented MRS enables quick and easy mounting of different accessory such as a magnetic bottle or a lock to the frame. The Yamaha 500Wh battery will be available for hardtails, full suspension and Trekking eBikes at an attractive price/performance ratio.

# HAIBIKE

### Highlights:



#### SDURO FullSeven LT 6.0

Aluminium 6061 hydroformed, 150mm travel, Intube Battery Concept & Modular Rail System  
Motor: Yamaha PW-SE  
Battery: Yamaha lithium-ion 500Wh  
Display: Yamaha display, 1.7" screen, 7 functions  
Fork: RockShox Revelation RC, 150mm travel  
Rear Shock: RockShox Delure RT  
Drivetrain: Shimano SLX 20 speed  
Brakes: Shimano  
RRP: 3.799€



#### SDURO HardSeven 7.0

Frame: Aluminium 6061 hydroformed, Intube Battery Concept & Modular Rail System  
Motor: Yamaha PW-SE  
Battery: Yamaha lithium-ion 500Wh  
Display: Yamaha display, 1.7" screen, 7 functions  
Suspension Fork: RockShox Sektor RL, 120mm travel  
Drivetrain: Shimano Deore 20 speed  
Brakes: Shimano MT 520 (4-piston)  
RRP: 2.999€



#### SDURO Trekking 6.0

Frame: Aluminium 6061 hydroformed Intube Battery Concept & Modular Rail System  
Motor: Yamaha PW-SE  
Battery: Yamaha lithium-ion 500Wh  
Display: Yamaha multimeter display with 16 functions; Bluetooth connection to smartphone via Bluetooth  
Drivetrain: Shimano XT 20 speed  
Brakes: Shimano disc brakes MT400  
RRP: 2.999€





## Uncompromising power and ePerformance: 17 new eMountainbikes especially for women

Without compromising on power and performance, Haibike designed the Life Line especially for women. The hardtails and full-suspension models offer maximum comfort and highest safety providing a perfectly adjusted geometry. Now the Bavarian manufacturer increases its successful Ladies' collection by 17 new eMountainbikes in fresh colours.

### Optimised geometry for more comfort and safety

Shorter stems, adapted specifications, special saddles and extra small frame sizes characterise the Life Line. In the development of the new models, Haibike further optimised the Ladies' geometries: For improved control and an ergonomic sitting posture the head tube was lengthened; for more comfort and safety Haibike reduced the stand-over height of the top tube. Crank length, handlebar width and brakes were adjusted as well in order to be able to react even more intuitively and efficiently.

The motorisation via drive units of Bosch or Yamaha is as powerful as with the other eMountainbikes of the SDURO family. The SDURO HardSeven Life models are equipped with suspension forks with a travel of 120mm as standard; the SDURO FullSeven Life models are available with a travel of 120mm or 150mm.

### Sporty feminine design

From the very beginning, the development of the Life Line has been supervised by Anne Katrin Nehring, Product Manager at Haibike: „We intent to motivate more women to ride eBikes. The female anatomy often leads to problems when purchasing a bike, because only few products are designed to meet women's needs. Our especially adjusted geometry, therefore, ensures more comfort, safety and - of course - a lot of riding pleasure.”

With regard to the colour matching, the product manager puts particular emphasis on a feminine but also sportive look. Also the new collection convinces with fresh designs which offer the perfect look for every preference.

# HAIBIKE

### Highlights:



#### SDURO HardSeven Life 3.0

Frame: Aluminium 6061, HD interface, smallest frame size: XS with a seat tube length of 35cm  
Drive unit: Yamaha PW-SE system, 500Wh  
Drivetrain: Shimano Deore 20 speed  
Fork: Suntour XCR suspension fork with 120mm travel  
Brakes: Tektro HDM276 203/180mm (special lever for women)  
RRP: 2.399€



#### SDURO FullSeven Life LT 7.0

Frame: Aluminium 6061, InTube Battery Concept (IBC), smallest frame size: S with seat tube length of 40cm  
Drive unit: Bosch Performance CX, i500Wh Powertube  
Drivetrain: Sram NX 11 speed  
Fork: Suntour Aoin35 suspension fork with 150mm travel  
Rear Shock: Rock Shox Monarch RT with 150mm travel  
Brakes: Tektro Orion 203/180mm  
RRP: 3.999€



# Connected ePerformance enters the next round eConnect 2.0 with new design and features



Smartphones with internet access are an integral part of our daily lives. Anyone who wants can now connect in seconds from Schweinfurt to the other end of the world – why not connect your bike? Haibike posed this question three years ago and gave the response with the release of the first connectivity system for its ePerformance bikes as a series product called eConnect. Thus, the Lower Franconian manufacturer created the technological basis for digital connection of the eBike with all new intelligent features that make the Haibike even smarter and safer. Following the successful first edition of the eConnect system, now the further developed version follows: eConnect 2.0 with a modern design, a user-friendly interface and extended features.

## Free update for the app: eConnect 2.0

The eConnect app turns smartphones into a control centre. Once installed and registered, the user is able to track the location of the eBike in real-time and make adjustments, no matter where he or his Haibike is. Several bikes can be managed via the app - ideal for families or couples. It is also possible for the bike dealer to activate the anti-theft control of the bikes.

Right after Eurobike 2018, the update for the eConnect app will be available for download in the corresponding app stores. The eConnect web portal – which allows viewing all eConnect data from a computer - gets a new look with a more user-friendly navigation. The eConnect app is available in eight languages (German, English, French, Spanish, Italian, Czech, Polish and Dutch) for iOS and Android devices.

## Dashboard with a new look

The Dashboard will appear after the update in a modern tile design with a clear navigation through all important functions and data:

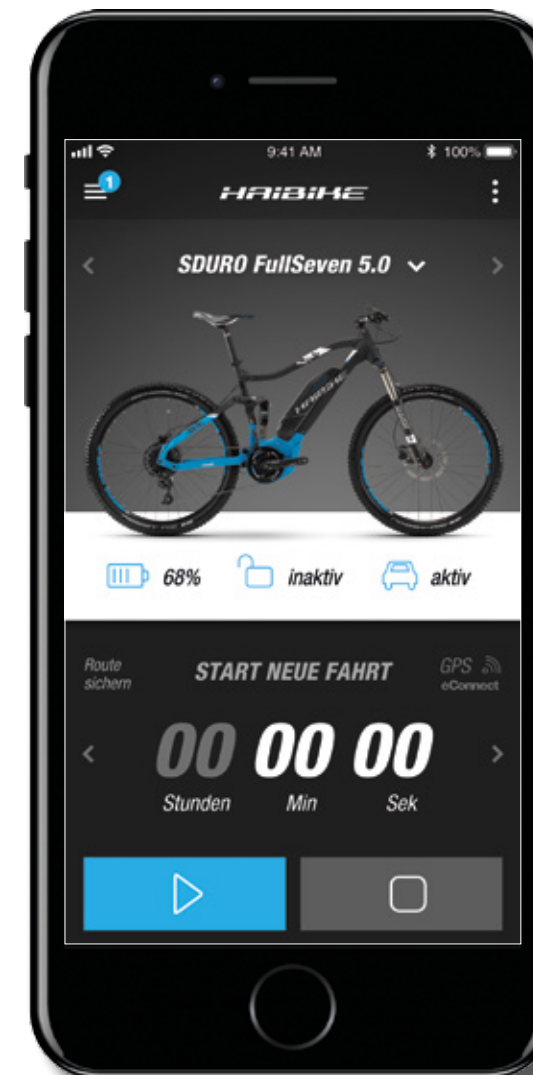
- Bike Lock status
- Buttons for start / stop for manual route recording
- State-of-Charge of eBike battery and range (depending on selected mode) for Yamaha PW-X & PW-SE
- Current eBike location and last update
- Distance covered and ride time - current month
- My last ride



**HAIBIKE**

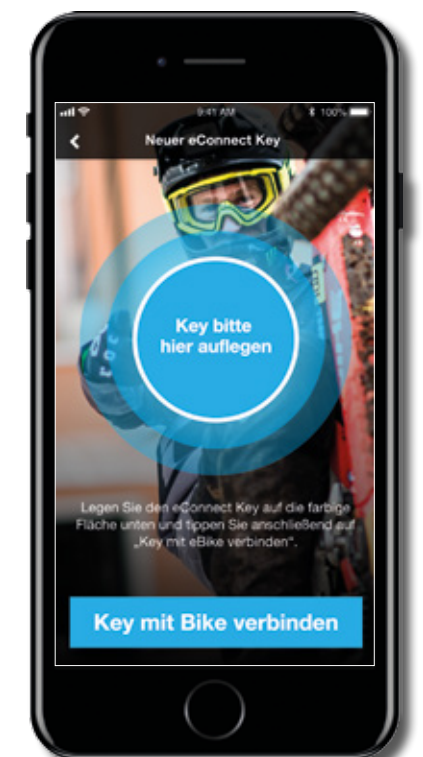


**Connectivity-System for ePerformance**  
Digital network of the eBike with completely **new intelligent features** which make the Haibike even smarter and safer.



## Dashboard with new look

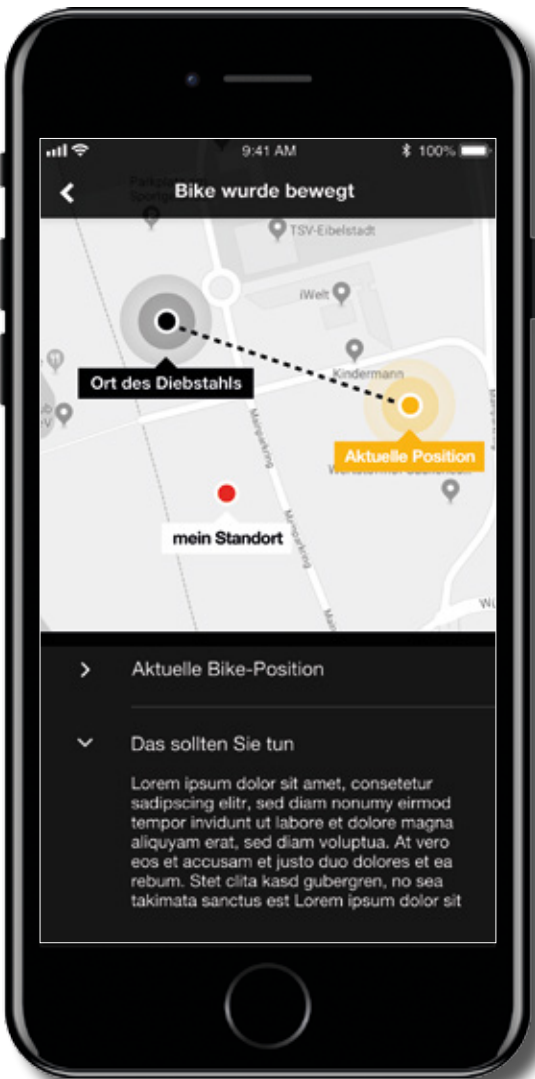
The first successful edition is now followed by eConnect 2.0 with a modern and user-friendly design as well as with advanced features.





The eBike calls for help if needed

The sensor technology of the intelligent eConnect system responds quickly and reliably in unusual situations such as a crash. If speed drops very abruptly and the eBike falls over on its side, a message appears on the rider's smartphone. If the rider does not respond after a certain time, an automatic emergency SMS will be sent to up to two pre-defined emergency numbers.



GPS-based monitoring function / GPS-Watch

The Haibike eConnect offers a GPS-based monitoring function which can be activated easily via the app. When the anti-theft control is activated, the sensors detect automatically when the eBike is moved and sends a message to the owner's smartphone. If the eBike is subsequently removed from the storage location, the owner receives another message on his smartphone with the theft route and the current location. If necessary, this message can be forwarded to the police as well as to the insurance company.

Improved route recording

With the help of the data transferred from the GPS transmitter in the eBike, the rider can at any time query the location of his eBike in the app and the online portal. In addition, routes can be recorded, stored and shared with other users. Until now, eConnect recorded all routes automatically. With the update the users can now actively start and stop the route recording. After completing a ride, the route is stored in the cloud and can be exported. Another new feature is the monthly overview of the tracked routes. The route display and route information have been expanded: The course of the route as well as all recorded riding data, such as distance, ride time and flow value can be retrieved later in the app and in the webportal.

Compact on-board-unit as interface

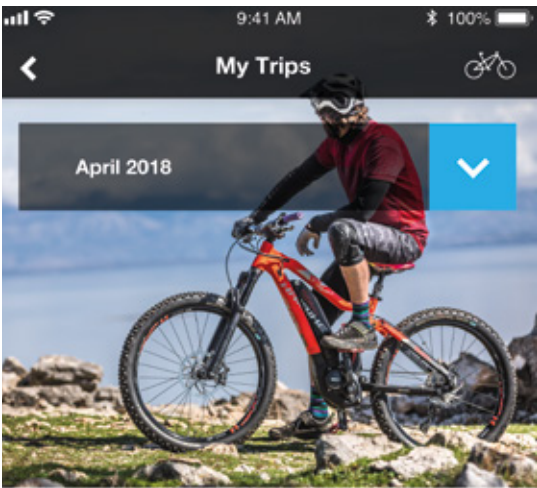
The technological basis is a compact on-board-unit in which several central components have been integrated: a GPS transmitter for a satellite-based location, a GSM chip for data communication as well as a Bluetooth transmitter for near-field communication with other Bluetooth devices such as heart-rate belts or smartwatches. A 3D acceleration sensor detects vibrations, a 3D gyro sensor determines the position of the eBike. A separate Li-ion battery makes the eConnect hub independent of the main battery of the eBike and ensures a safe operation for many months.

Cooperation with Deutsche Telekom

The eConnect module works via connection to the mobile network. Therefore, Haibike entered in cooperation with Deutsche Telekom. When you buy the bike you get a contract for two years inclusive, a subsequent extension of three years costs 99 euros. Haibike was the first eBike manufacturer to recognize the potential of digital connection and explore it:

„We are convinced that the digitization will bring a forward-looking innovation boost, making the eBike an even smarter system and providing added value to the Haibike rider“, says Andy Benz, Project Manager Research & Development at Haibike and responsible for the development of the eConnect System.

Further updates are planned in the future and Haibike will continue on the path of ePerformance, innovation and digitization.



875 km 128 15:56

TRIP 6	Randersacker - Würzburg	>
26.04.2018	30km 15:20 - 16:30 Uhr	
TRIP 5	Würzburg	>
20.04.2018	45km 15:20 - 16:30 Uhr	
TRIP 4	Randersacker	>
18.04.2018	46km 15:20 - 16:30 Uhr	



## Younit shows, how retail trade works today

### Younit shows, how retail trade works today

By introducing the Dealer Center, Winora ushered in a new era of specialist trade. In 2014, the world's first interactive MultiMedia information and consulting system especially for the specialist trade was launched. The award-winning Dealer Center quickly and easily summarizes all products and all relevant information in a digital point of sale. This year, Winora Group is launching the next generation: Younit - for perfect rides. With a modern design, a portable desktop version and new consulting tools, such as BIKE SIZING by Smartfit.

The first version has proven to be a real carefree package for dealers and considerably valorises the specialist trade. With its interactive catalogue, the smart consulting tools and the extensive media library, the system supports consultation by the specialist dealer in a competent way and bridges at the same time the waiting gap for end consumers.

### Younit is available in three different versions:

- Package S: Portable desktop version with 13.3-inch monitor
- Package M: Stationary version with 24-inch monitor
- Package L: Stationary version with 32-inch monitor

The new portable desktop version enables specialist dealers to offer mobile advice: Whether at the shop counter or directly in front of the bike - the portable consulting system can be used flexibly in the salesrooms. Furthermore, all dealers can access the new Accentry B2B shop which enables them to check the availability of all products in real time and place orders at any time.

### BIKE SIZING by Smartfit

The consulting tool BIKE SIZING by Smartfit supports in determining the optimal frame size: Figure out body dimensions together with the specialist dealer, enter the information into the Younit system and find the suitable bike with the help of BIKE SIZING. The new feature serves in particular as supplement to the consultation by the specialist dealer and provides a first orientation for the end customer.

**You entered these values.**

Body length (cm)	Arm length (cm)	Leg length (cm)
175.0	50.0	96.0

Gender (optional)

Please specify

Male

Female

Unisex

## HAIBIKE

### Bike Finder: Which bike is the right one for me?

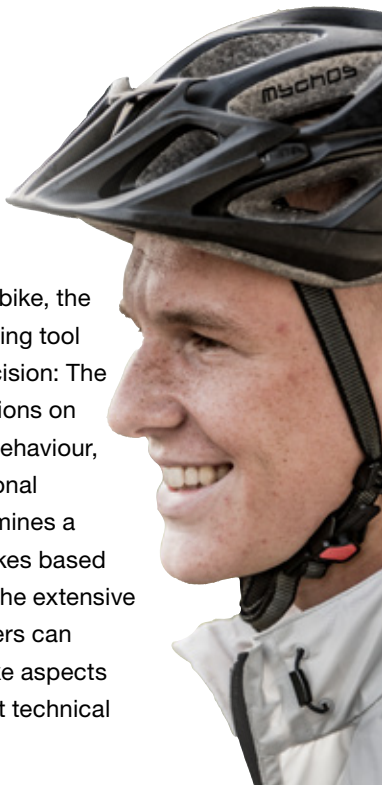
If you are looking for a bike, the new interactive consulting tool helps you to take a decision: The Bike Finder asks questions on the customer's riding behaviour, habits, as well as personal preferences and determines a selection of suitable bikes based on this information. In the extensive media library, customers can get some tips on all bike aspects and explanations about technical background.

### Personal data can be retrieved via QR

The digital bike catalogue offers a clear presentation of all products including detailed information about specifications and geometry of the bikes. In the Younit system, the customer can set up a list of personal favourites and send it to a desired email address. All data can additionally be stored via QR code and be retrieved via camera scan at any time.

### Well prepared for the future

In the next months, additional features will be available which support and simplify the sales and consultation process. In addition to numerous new features, 140 Bike Parts brands as well as EXCLUSIVELY all brands of Accell Group will be available in the future.





# WE ARE ePERFORMANCE

## CONTACT & DOWNLOAD

---



### **Jasmin Schindelmann**

Public Relations

**Winora-Staiger GmbH**

Max-Planck-Straße 4-8

97526 Sennfeld

Deutschland

Phone: +49 (0) 9721 6501 - 8684

Fax: +49 (0) 9721 6594 - 45

[jasmin.schindelmann@winora-group.de](mailto:jasmin.schindelmann@winora-group.de)

PressKit Download

**[haibike.com/presskit](http://haibike.com/presskit)**