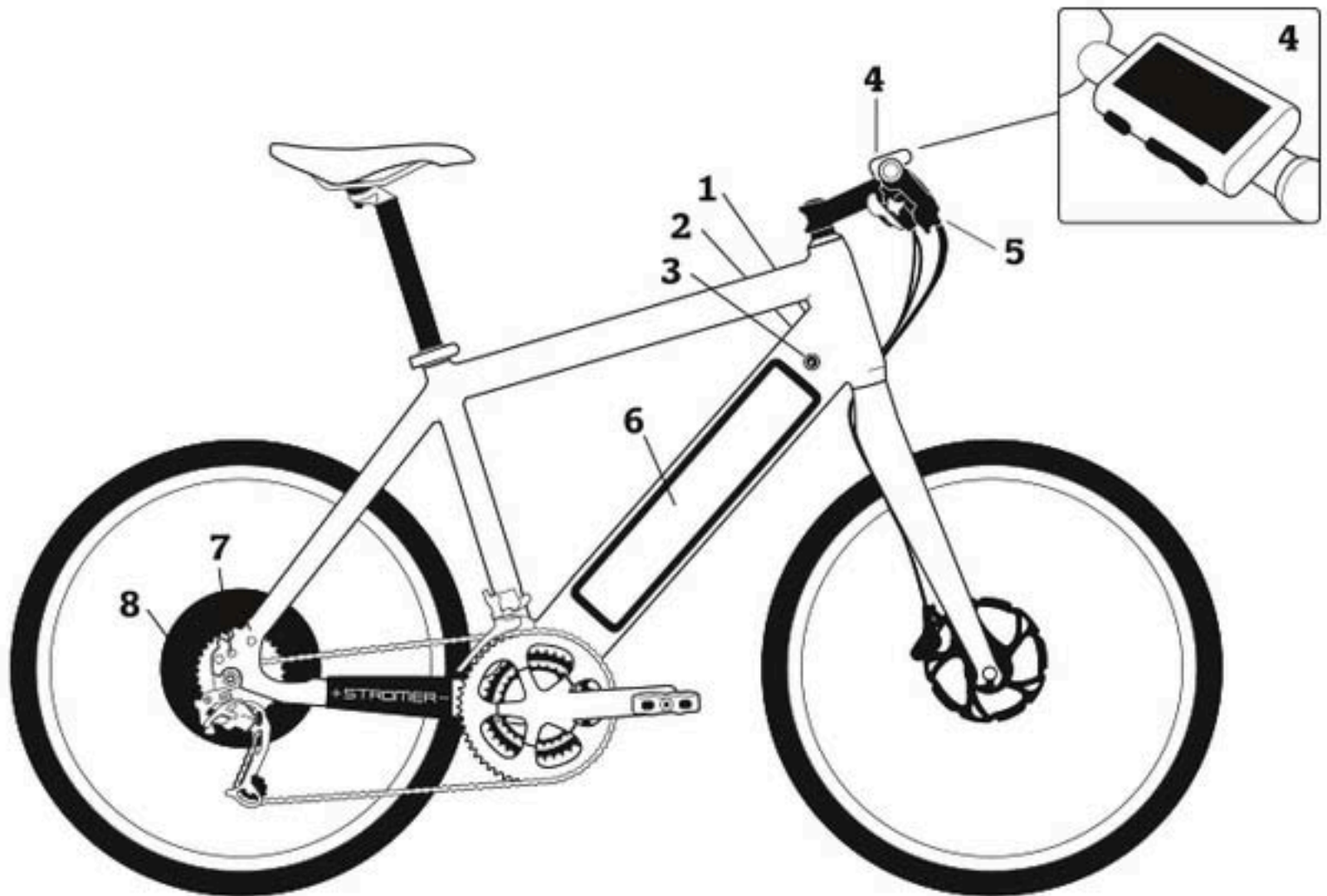


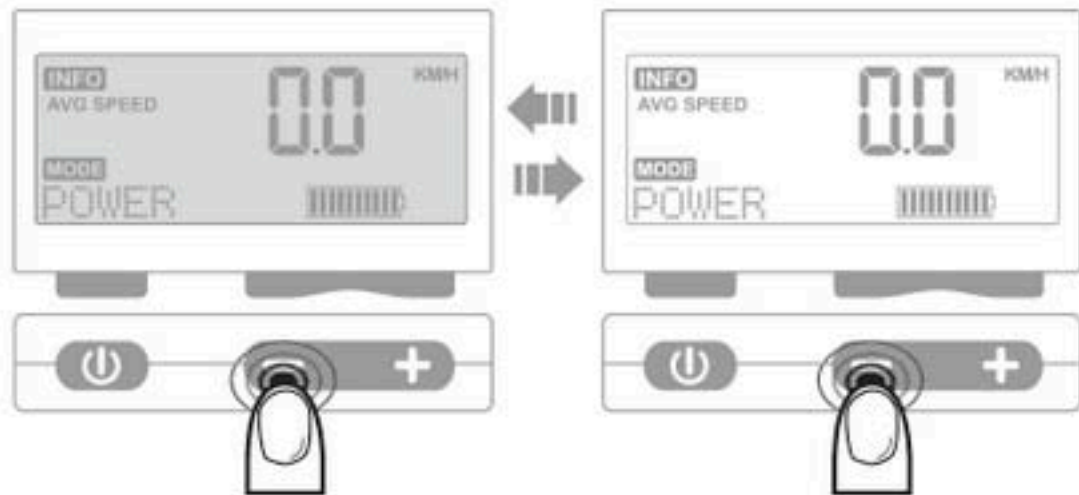
STROMER INDIVIDUAL PARTS

1. Battery eject button
2. Battery charging socket
3. Battery compartment lock
4. Interface
5. Brake sensor
6. Battery compartment
7. Torque sensor
8. Hub motor



BACKGROUND ILLUMINATION

In order to switch the background illumination of the interface on or off, press and hold the minus button for 2 seconds.

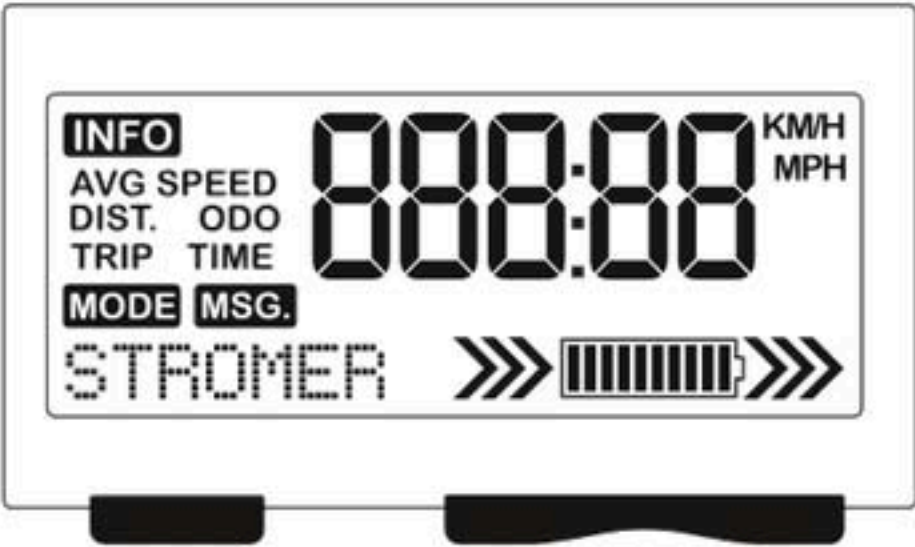


BATTERY

The ST1 is equipped with a high-capacity lithium-ion battery. This supplies energy to the drive system and all the other electronic components.

- Each battery has 50 Samsung battery cells.
- The battery management system (BMS) developed by Stromer provides overvoltage and undervoltage protection and optimizes the service life of the lithium-ion battery.
- You can simply use your ST2 battery in another Stromer ST1 or use an extra battery for your ST1.
- You can fully recharge the ST1 battery after every journey. This increases the service life of the battery and ensures that you are always prepared for the next ride. There is no need for you to run down the battery every time - there is no memory effect. Top up your battery charge as often as possible, do not let it run down to empty and recharge it even if it has only been in use for a short period of time.
- Do not dispose of your ST1 battery and the charger with the domestic waste. In most countries dealers are obliged to take back electrical appliances and batteries.
- Find out what rules apply to the disposal of old appliances and batteries in your country. Take used battery chargers and the battery back to your Stromer dealer.

DISPLAY AND FUNCTIONS



INFO

SPEED	Current speed
AVG SPEED	Average speed
DIST.	Trip distance
DIST. ODO	Total distance
TRIP TIME	Time ridden
TIME	Time

MODE

The mode display shows the current support or recuperation mode (e.g. 1 – Eco, 2 – City, 3 – Tour, 4 – Power).

MSG.

The MSG display (Message) shows a message, a status or a code.

STROMER

GENERAL INFORMATION DISPLAY

The following can be displayed here, among other things:

POWER or	Support modes
REKUP2	Recuperation modes
LOCKED	System status info
CODE0000	Parameter settings
HALL	Fault messages

000:00 KM/H
MPH

The following can be displayed here, among other things: Speed, average speed and time. Depending on the region, the speed is constantly displayed here. Information such as average speed and time are then shown in the General information display.

ENERGY RECOVERY (is displayed to the left of the battery display)

	little
	medium
	maximum

BATTERY CHARGE STATUS

	100%
	60%
	0%

ENERGY CONSUMPTION (is displayed to the right of the battery display)

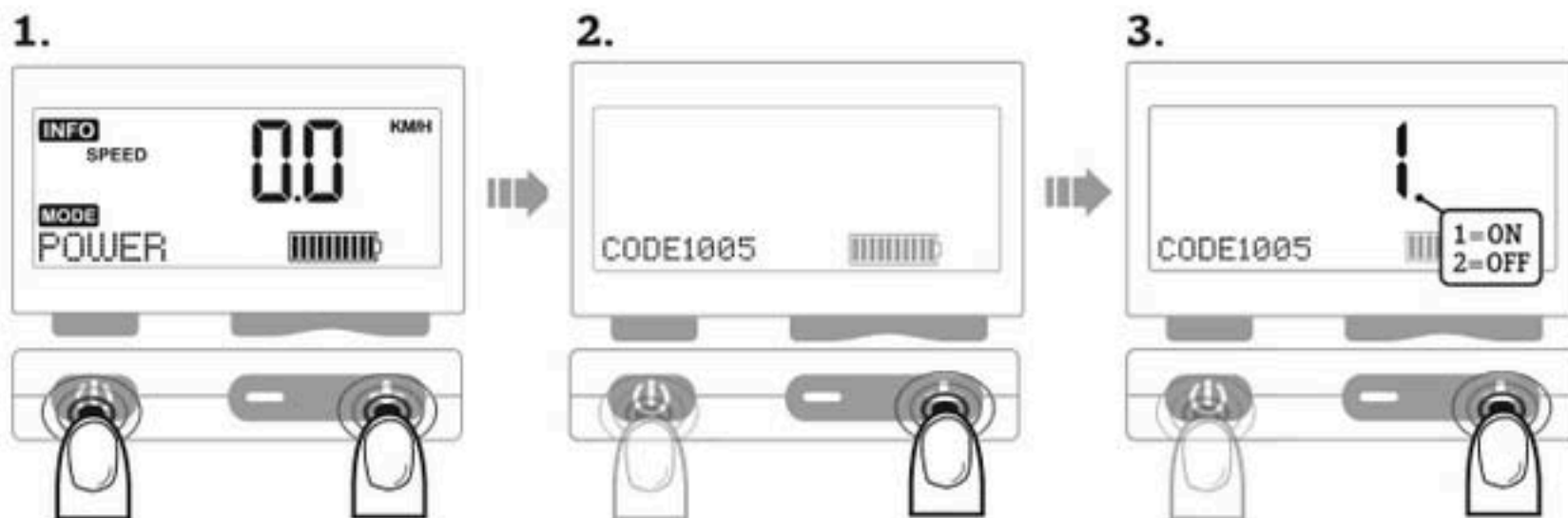
	little
	medium
	maximum

ENABLE BOOST MODE

In this mode, the Stromer can be ridden up to 20 km/h (12.5 mp/h) without pedal support.

For use, see "Use Boost mode".

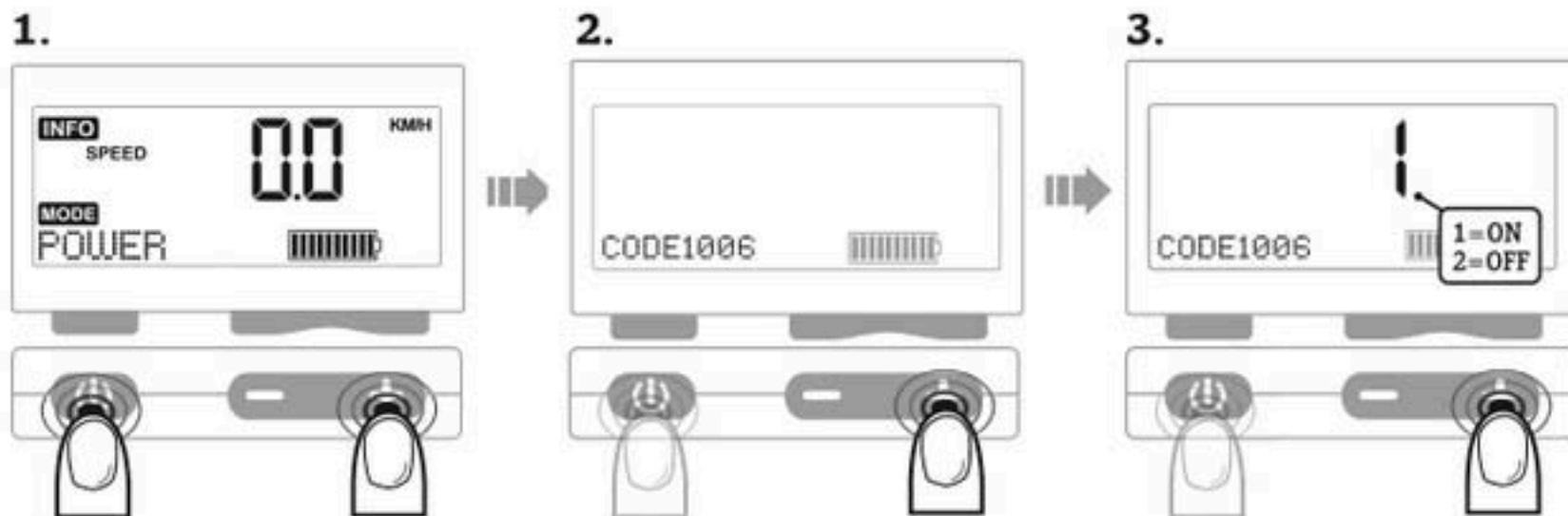
1. **Call up menu:** Press the On/Off button and the plus button at the same time and hold for 3 seconds.
2. **Enter code 1004:** Using the plus and minus button, select the desired number and confirm using the On/Off button. To confirm the code, press and hold the On/Off button for 3 seconds.
3. **Select value:** Using the plus and minus button, select the **value 1 ON / 2 OFF** and confirm this by pressing and holding the On/Off button for 3 seconds. Save is displayed.



ENABLE MOVE MODE

This mode is used for push assistance. The Stromer rides along at walking speed. For use, see "Use Move mode".

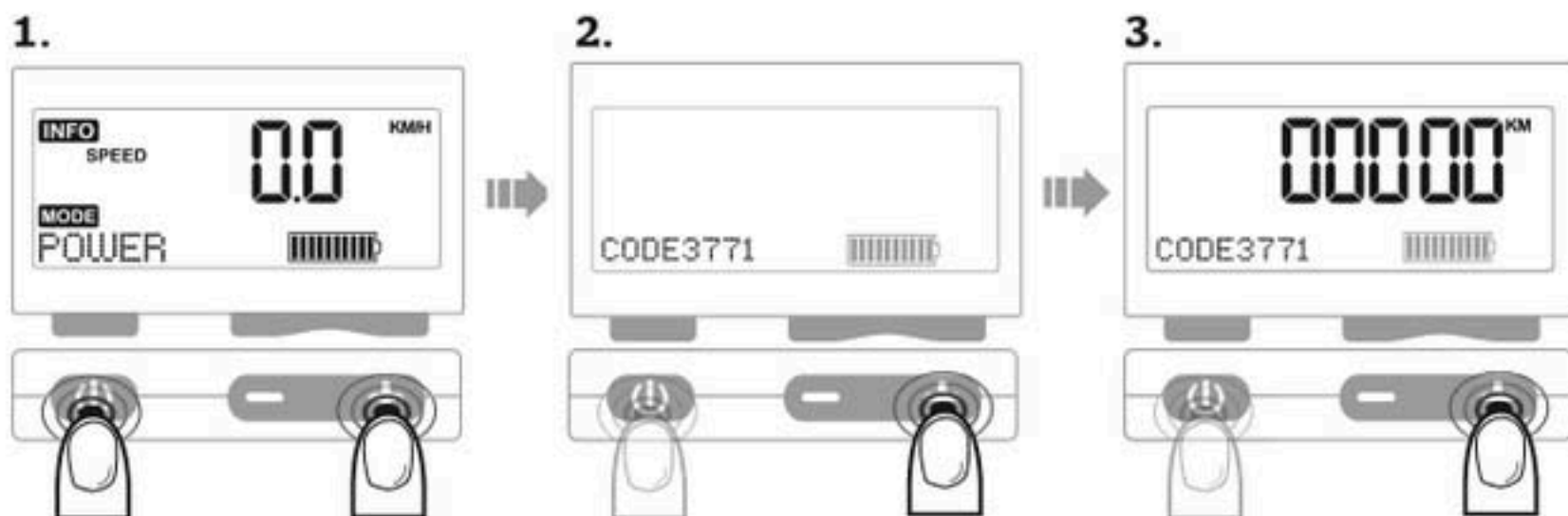
1. **Call up menu:** Press the On/Off button and the plus button at the same time and hold for 3 seconds.
2. **Enter code 1006:** Using the plus and minus button, select the desired number and confirm using the On/Off button. To confirm the code, press and hold the On/Off button for 3 seconds.
3. **Select value:** Using the plus and minus button, select the **value 1 ON / 2 OFF** and confirm this by pressing and holding the On/Off button for 3 seconds. Save is displayed.



ENTER TOTAL DISTANCE

You can hereby enter your total distance.

1. **Call up menu:** Press the On/Off button and the plus button at the same time and hold for 3 seconds.
2. **Enter code 3771:** Using the plus and minus button, select the desired number and confirm using the On/Off button. To confirm the code, press and hold the On/Off button for 3 seconds.
3. **Enter total distance:** Using the plus and minus button, select the desired value and confirm this by pressing and holding the On/Off button for 3 seconds. Save is displayed.



ERROR MESSAGES

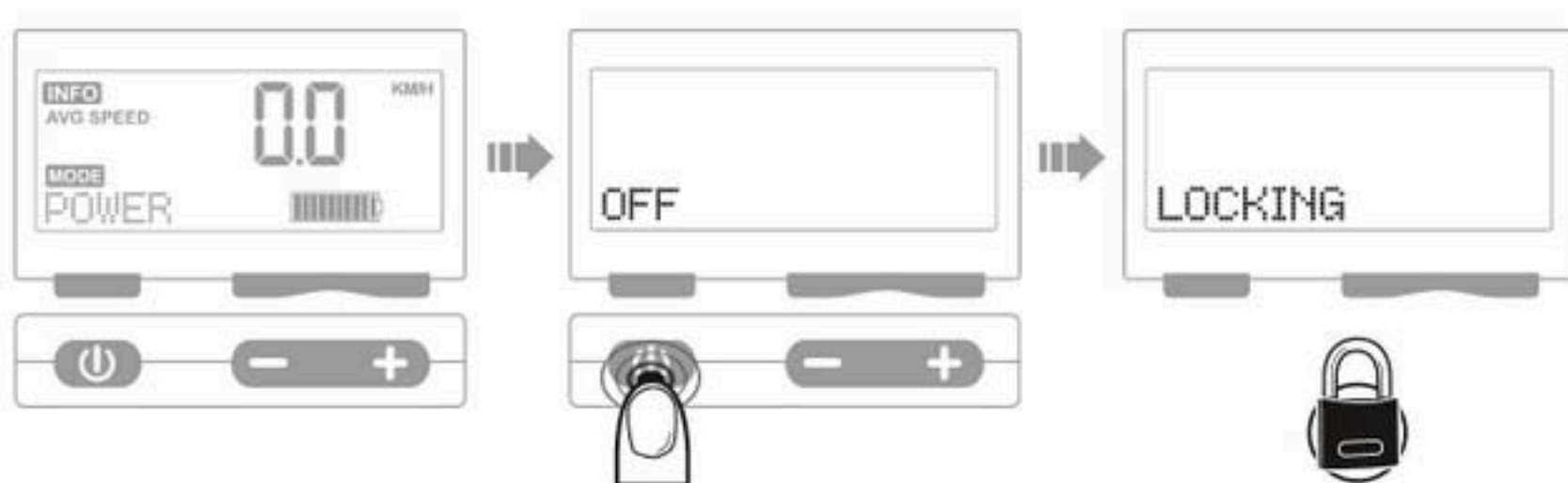
1. Try to identify the problem using the troubleshooting guide below.
2. If your problem is listed in the trouble-shooting guide, you can try to solve the problem utilizing the adjacent suggested solution. If this is not possible or if your problem is not listed, continue with step 3.
3. Contact your local dealer for service.

Erro Message	Solution
HEAT	Motor temperature high. Riding further may lead to overheating.The motor is overheated and has automatically switched itself off to protect any damage to the electronics. Allow the motor to cool down, then resume riding as normal.
OVERHEAT	Connector disconnected or motor defect. Check all connectors. If the problem persists, please contact your local dealer for service.
NO_COM	Connector disconnected or motor defect. Check all connectors. If the problem persists, please contact your local dealer for service.
HALL	Motor defect: Contact your local dealer for service.
NO_BAT	No battery or connectors are disconnected. Ensure that there is a fully charged battery in the battery compartment, and that all connectors are properly connected. If the problem persists, please contact your local dealer for service.

LOCK / UNLOCK SYSTEM

LOCK SYSTEM

To lock the system, press and hold the On/Off button for around 6 seconds until the «Locking» message appears.



UNLOCK SYSTEM

Switch the Stromer on in the normal fashion, [see "Switch On Stromer"](#) and enter your password. With -/+ you can select the number and confirm it with the On/Off button in each case.

Password: Default setting "1234", [see "Password Change"](#) to define your own password.



OTHER PROBLEMS

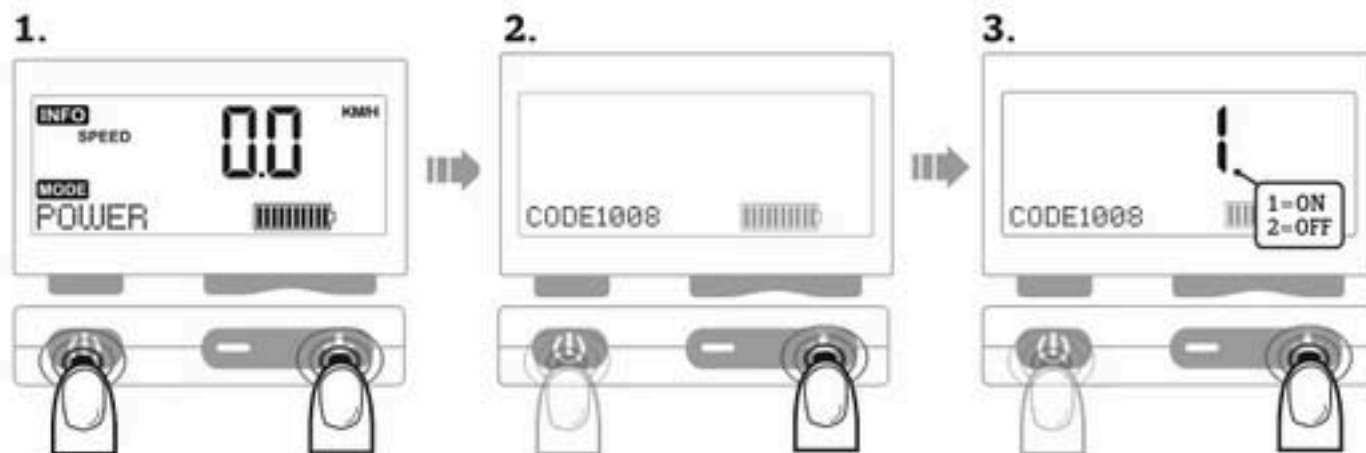
1. Try to identify the problem using the troubleshooting guide below.
2. If your problem is listed in the trouble-shooting guide, you can try to solve the problem utilizing the adjacent suggested solution. If this is not possible or if your problem is not listed, continue with step 3.
3. Contact your local dealer for service.

Problem	Solution
Motor assistance is irregular or non-functioning.	<p>Switch off the control unit. Make sure that the pedals are completely free of load. Switch your control unit back on and retry.</p> <p>The brake sensor on the right brake lever may be misaligned. The sensor thereby sends a constant switch-off signal to the motor. Disconnect the connector of the brake sensor to the control unit and retry. If this addresses the problem, the sensor can be reset during your next service appointment.</p>
After switching on, four zeros (0000) appear on the display and the first digit flashes.	The system lock was activated when switching off. To deactivate the system lock, see "System lock / unlock" .
The control unit cannot be switched on.	Replace the control unit's battery. To replace, remove the unit from the handlebar. This requires a Phillips head screwdriver and a button battery (CR2032). The battery can also be replaced at your local dealer.
the control unit switches on, but the battery pilot light flashes even if thE BATTERY is full.	Check connections. If the problem persists, contact your local dealer for service.

PASSWORD CHANGE

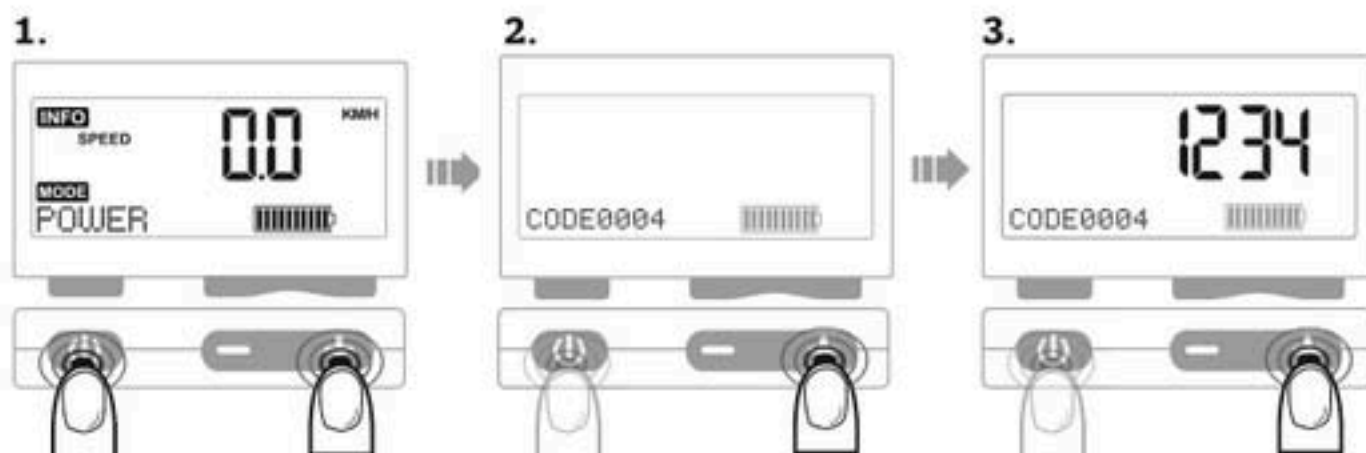
ALLOW PASSWORD CHANGE CODE 1008

1. **Call up menu:** Press the On/Off button and the plus button at the same time and hold for 3 seconds.
2. **Enter code 1008:** Using the plus and minus button, select the desired number and confirm using the On/Off button. To confirm the code, press and hold the On/Off button for 3 seconds.
3. **Select value:** Using the plus and minus button, select value 1 and confirm this by pressing and holding the On/Off button for 3 seconds. Save is displayed. Back to 0 after the change.



CHANGE PASSWORD CODE 0004

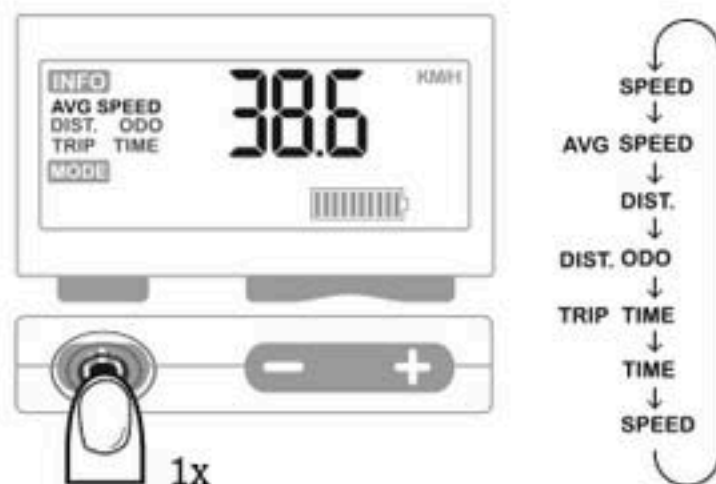
1. **Call up menu:** Press the On/Off button and the plus button at the same time and hold for 3 seconds.
2. **Enter code 0004:** Using the plus and minus button, select the desired number and confirm using the On/Off button. To confirm the code, press and hold the On/Off button for 3 seconds.
3. **Set password:** Using the plus and minus button, select the desired value and confirm this by pressing and holding the On/Off button for 3 seconds. Save is displayed.



SELECT / RESET INFORMATION DISPLAY

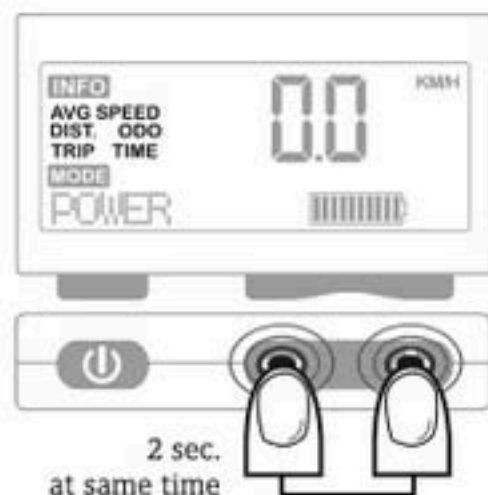
SELECT INFORMATION DISPLAY

By repeatedly pressing the button, you access the information displays.



RESETTING INFORMATION DISPLAY

The information display flashes briefly if the reset was successfully completed.



SELECT SUPPORT OR RECUPERATION MODE

MANUAL RECUPERATION MODE

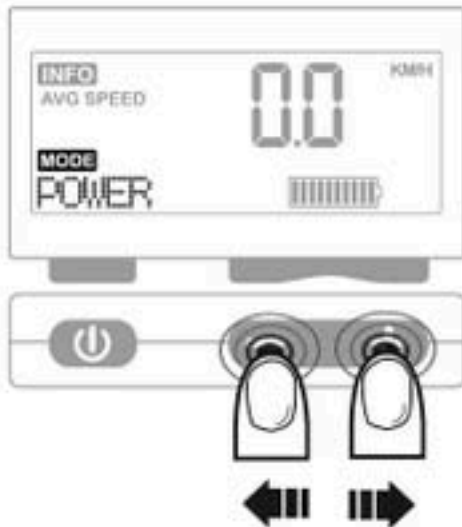
The energy recovery is normally activated upon braking. It can also be activated manually by selecting the mode. Select a «Recup-Mode» to recover energy and thereby brake electrically.

SUPPORT MODE

The Stromer has four different modes:

- 1 – Eco (150 %),
- 2 – City (200 %),
- 3 – Tour (250 %)
- 4 – Power (300 %)

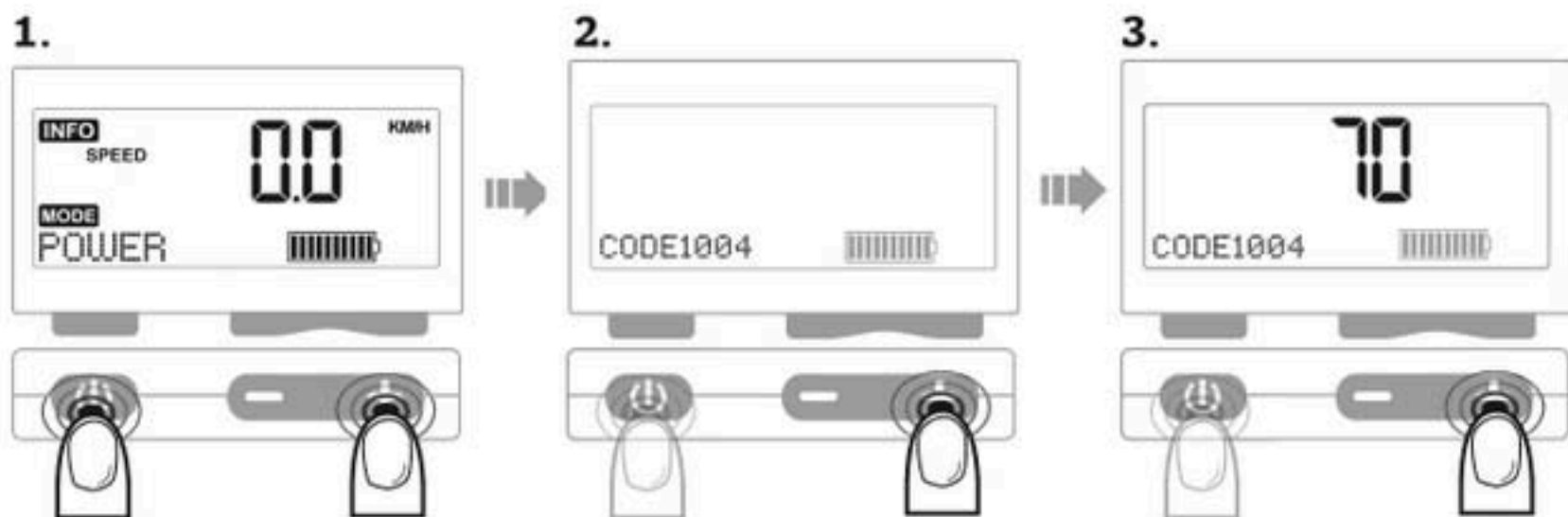
When idling (Zero mode), nothing is shown in the mode display and the motor does not provide any support.



SET SENSOR SENSITIVITY

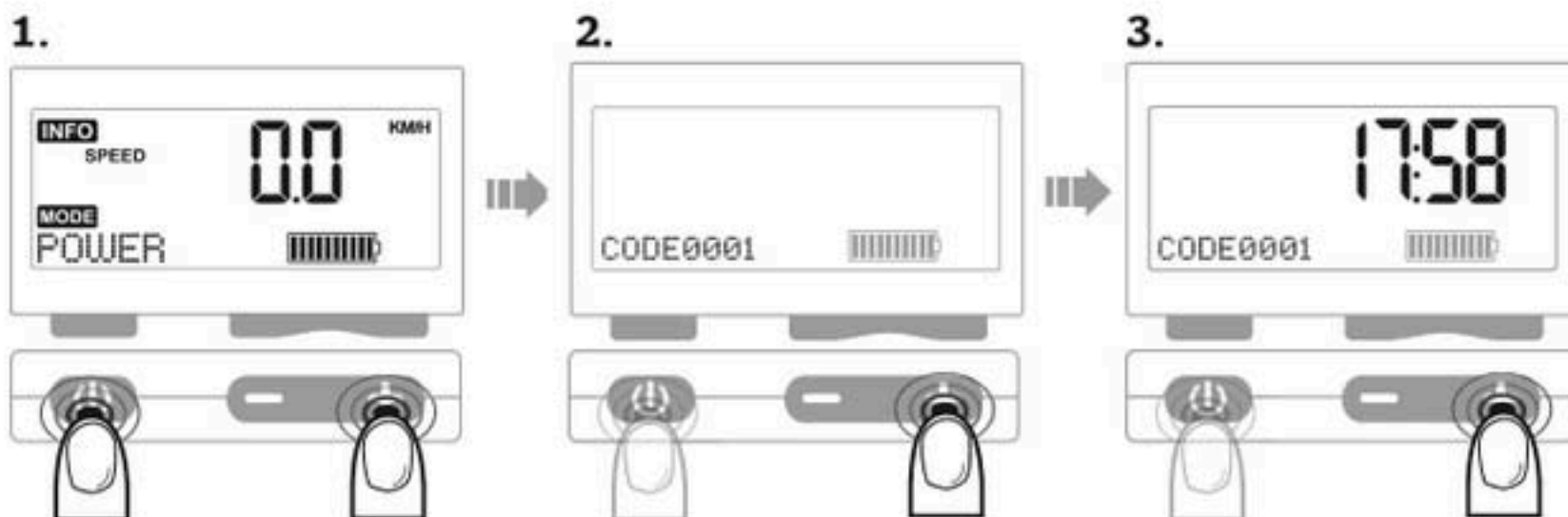
With this setting you can define the ratio between rider power and motor support. The sensor sensitivity thereby affects the range, [see "Battery Range - Influences and tips"](#).

1. **Call up menu:** Press the On/Off button and the plus button at the same time and hold for 3 seconds.
2. **Enter code 1004:** Using the plus and minus button, select the desired number and confirm using the On/Off button. To confirm the code, press and hold the On/Off button for 3 seconds.
3. **Select value:** Using the plus and minus button, select the desired value and confirm this by pressing and holding the On/Off button for 3 seconds. Save is displayed.

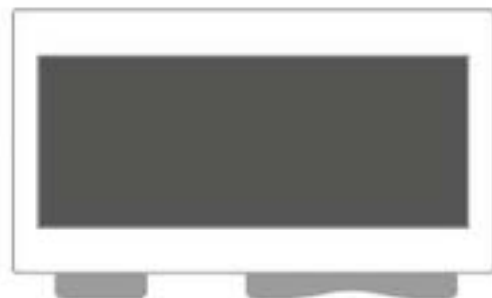
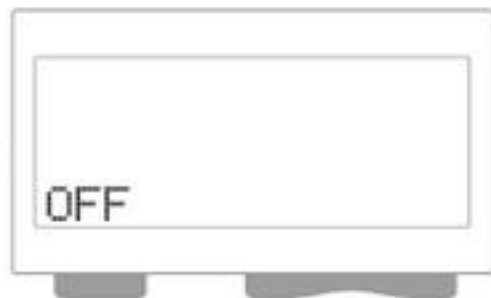
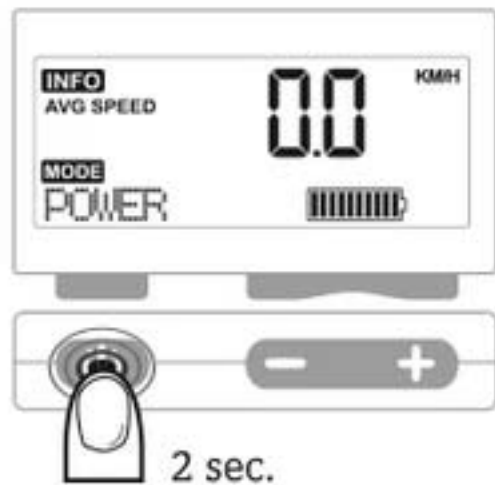


SET TIME

1. **Call up menu:** Press the On/Off button and the plus button at the same time and hold for 3 seconds.
2. **Enter code 0001:** Using the plus and minus button, select the desired number and confirm using the On/Off button. To confirm the code, press and hold the On/Off button for 3 seconds.
3. **Select value:** Using the plus and minus button, select the desired value and confirm this by pressing and holding the On/Off button for 3 seconds. Save is displayed.

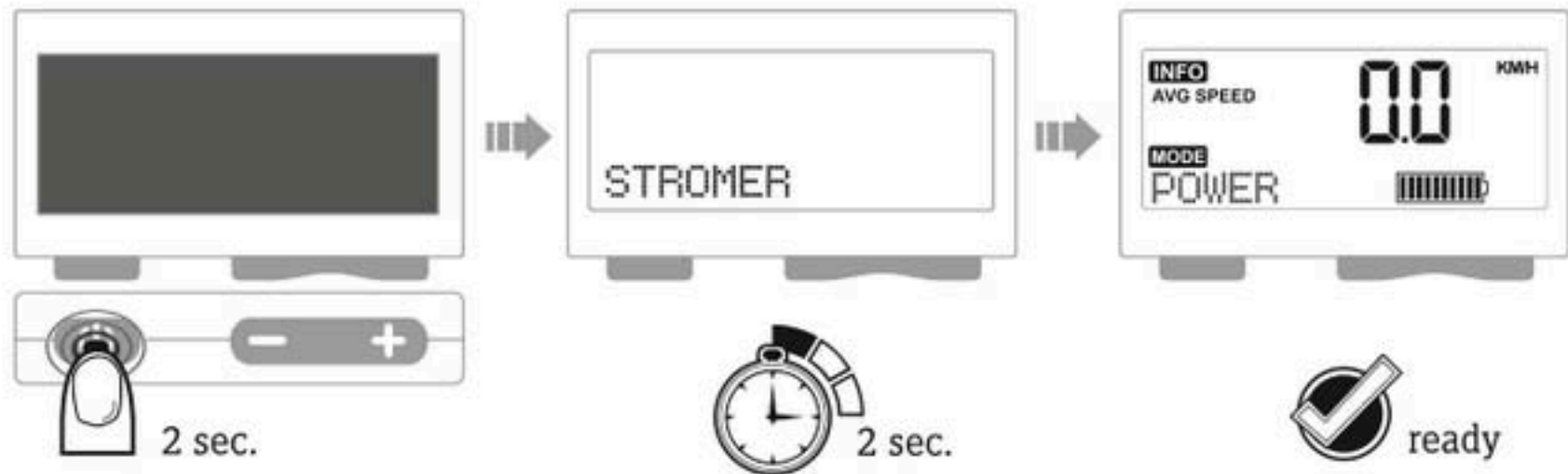


SWITCH OFF STROMER



SWITCH ON STROMER

Important note: When switching on, the pedal must be completely free of load.



SWITCH RECUPERATION MODES ON/OFF

1. **Call up menu:** Press the On/Off button and the plus button at the same time and hold for 3 seconds.
2. **Enter code 1009:** Using the plus and minus button, select the desired number and confirm using the On/Off button. To confirm the code, press and hold the On/Off button for 3 seconds.
3. **Select value:** Using the plus and minus button, select the **value 1 ON / 2 OFF** and confirm this by pressing and holding the On/Off button for 3 seconds. Save is displayed.

